

BUSHBUCKRIDGE LOCAL MUNICIPALITY



**INTEGRATED DEVELOPMENT PLAN
(IDP) 2009/2010 - 2010/2011 -
2011/2012**



TABLE OF CONTENTS

1. INTRODUCTION

- 1.1. Message from the Executive Mayor
- 1.2. Message from **the Municipal Manager**

2. PREPARATION PROCESS

- 2.1. Process plan
- 2.2. Process Plan Illustration
- 2.3. Consultation Process

3. LEGAL FRAMEWORK

- 3.1. Legislative Framework
- 3.2. National & Provincial Strategies
- 3.3. ASGISA Guidelines
- 3.4. National Spatial Development Perspective

4. EXECUTIVE SUMMARY

- 4.1. Municipal Vision
- 4.2. Municipal Mission
- 4.3. Municipal Core Values
- 4.4. Municipal Institutional Structure
- 4.5. Municipal Structure

5. SITUATION ANALYSIS

- 5.1. General Background
 - 5.1.1. Location and Characteristics
 - 5.1.2. Socio-Demographic Profile
 - 5.1.3. Social Development
 - 5.1.4. Technical and Environment
 - 5.1.5. Economic Development

6. DEVELOPMENT STRATEGY

- 6.1. Community and Stakeholders priority issues

7. Development Strategy

8. Key performance Areas

- 8.1. Infrastructure and Services
- 8.2. Economic Development
- 8.3. Social Development
- 8.4. Institutional Transformation
- 8.5. Democracy and Governance



INTEGRATED DEVELOPMENT PLAN

Bushbuckridge Local Municipality

Integrated Development Plan: Revision 2009/2010-2010/2011-2011/2012

8.6. Financial Management

9. INTEGRATED PLANS

- 9.1. Operational 5 Year Implementation Plan
- 9.2. 5 Year Financial Plan
- 9.3. Capital Investment Programme
- 9.4. Spatial Development Framework
 - 9.4.1 Spatial Development Framework
 - 9.4.2 State of Environment Report
 - 9.4.3 Land Audit
 - 9.4.4 An integrated Environmental Implementation Plan
 - 9.4.5 Land Use Management System
 - 9.4.6 Population and address list survey
 - 9.4.7 Integrated Human Settlement policy
- 9.5. Integrated Socio-Economic Programme/Plan
 - 9.5.1. LED Strategy
 - 9.5.2. Gender and Equity
- 9.6. Integrated Water Services Development Plan
- 9.7. Integrated Environmental Programme/Plan
- 9.8. Integrated Institutional Programme/Plan
- 9.9. Disaster Management Plan
- 9.10. Performance Management, Monitoring and Evaluation
- 9.11. Human Settlement Plan
- 9.12. Integrated Transport Plan

Annexure.

- 1. Annexure A- Institutional Transformation
- 2. Annexure B- Integrated Plans

ACRONYMS

BBR	: Bushbuckridge
BLM	: Bushbuckridge Local Municipality
DBSA	: Development Bank of Southern Africa
EDM	: Ehlanzeni District Municipality
EEP	: Employment Equity Plan
EMS	: Environment Management Systems
EPWP	: Expanded Public Works Program
FET	: Further Education and Training
GIS	: Geographic Information Systems
IDP	: Integrated Development Plan
IWMP	: Integrated Waste Management Plan
LED	: Local Economic Development
LUMS	: Land Use Management System
MIG	: Municipal Infrastructure Grant
MPCC	: Multi-Purpose Community Centre
MSIG	: Municipal Systems Improvement Grant



INTEGRATED DEVELOPMENT PLAN

Bushbuckridge Local Municipality

Integrated Development Plan: Revision 2009/2010-2010/2011-2011/2012

NSDP	: National Spatial Development Perspective
PGDS	: Provincial Growth and Development Strategy
SDF	: Spatial Development Framework

1. Message from Management

1.1. Message from the Executive Mayor:

The IDP is a key hallmark of core service delivery and a development yardstick. In the latter regard the municipality's IDP is a product that has enhanced the people's contract as the people have developed it, for the people and by government through public representatives that have been elected by communities.

The IDP and the budget have over the years been provided for scrutiny, criticism and adding value to the communities. The projects that have been implemented have given opportunity for job creation, enhancing the consultants and contractors most in the area and beyond. The end product of the IDP is that communities have received the benefit through bulk infrastructure. The delivery of services will continue each year. The projects that have not been functional particularly on water have now received attention through remedial measures in place.

While there have been great achievements in the past five years, it is also important to note the great challenges of service delivery in the next five years. We should all ensure that the next IDP's should hasten development.

On behalf of Bushbuckridge I endorse the IDP and commit to its implementation thereof.

Clr: M.J. Morema



INTEGRATED DEVELOPMENT PLAN

Bushbuckridge Local Municipality

Integrated Development Plan: Revision 2009/2010-2010/2011-2011/2012

1.2. Message from the Municipal Manager

The implementation of the IDP is the core function of the municipal administration. In this regard the administration has been improving its capacity to manage and implement the IDP. We are pleased to have ensured that all core projects are now under implementation.

In order for the IDP to be implemented, it is essential that the public should cooperate and assist the municipality through ensuring that applications are filed and approved for any development in the municipal area of jurisdiction. Consequently informal settlements and all illegal developments are against development and militate the IDP's existence and implementation thereof.

The administration has gathered reliable information on the extent of various service delivery backlogs. Below is a summary of required projects' spending still required to meet the Presidential service delivery targets.

It is also imperative that the communities through vigilance should protect the IDP implemented projects. This will ensure that IDP projects are not vandalized during construction and after completion. Projects not protected by the communities cost the tax payers a lot of money in maintenance costs and capital costs.

The administration would like to thank you for all the cooperation and patience demonstrated and endured respectively over the years. The challenges of the communities are our challenges.

Mr C Lisa



INTEGRATED DEVELOPMENT PLAN

Bushbuckridge Local Municipality
Integrated Development Plan: Revision 2009/2010-2010/2011-2011/2012

2. PREPARATION PROCESS

2.1. District Framework:

The process plan of the Municipality is guided by the IDP Framework as adopted by Ehlanzeni District Municipality during a council meeting held in August, the IDP process plan for Bushbuckridge Local Municipality for 2009/2010 financial year was also approved by the council.

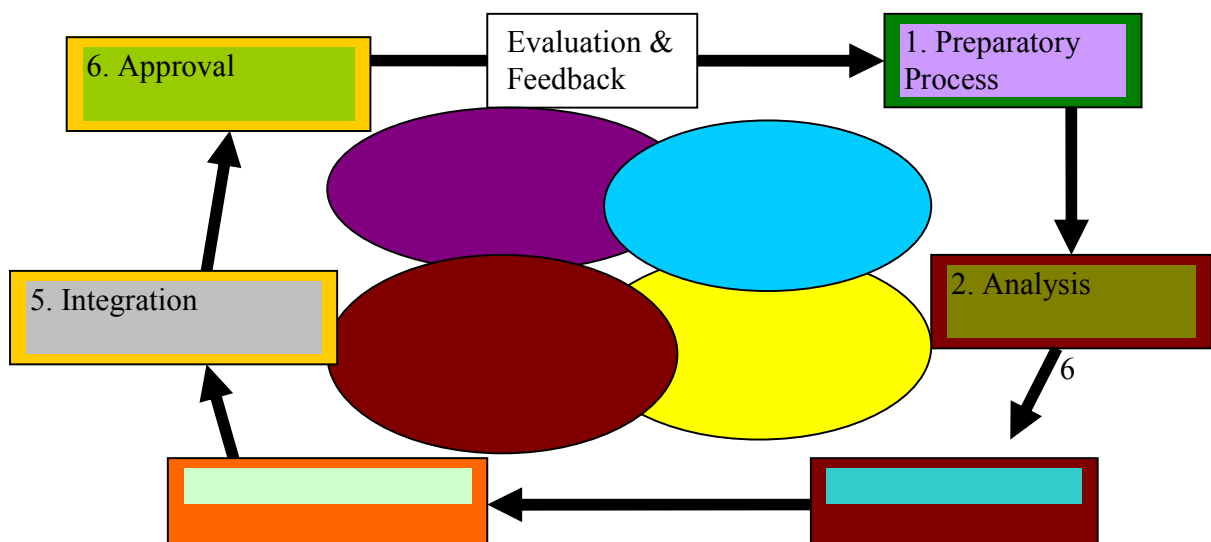
2.2. Bushbuckridge Local Municipalities Process Plan

The following process plan was followed for the reviewing of the IDP 2009/2010

1. **Preparation Phase** – Municipality Plan the process for drafting the IDP and set up a Phased programme for developing the IDP, the participatory process, and the budget for planning process.
2. **Analysis Phase** – During this phase the aim is to understand the existing circumstances within the municipality. It requires understanding the causes for priority concerns and the link with other existing systems.
3. **Strategy Phase** – here the municipality decides on its future development direction. The municipality develops a vision, a set of objectives to meet the vision, and strategies to fulfil objectives.
4. **Project Phase** – the purpose during this phase is to develop project proposals, and to undertake sufficiently detailed project planning to ensure an effective link between planning and delivery
5. **Integration Phase** – here the main aim is to ensure the projects are in line with the vision, objectives and strategies developed and resources available
6. **Approval Phase** – All interested parties and stakeholders are given the chance to comment on a draft IDP before it finally adopted by Council.
7. **Evaluation and Feedback** - this process is important as it assist with the strengthening sustainable project implemented by the IDP. Is proper to evaluate lessons and challenges to improve your practice.

The below diagram clearly indicates the process plan from the planning stage to the approval and how the evaluation and the feedback on the IDP will be done.

Table 1. Planning Diagram Flow





INTEGRATED DEVELOPMENT PLAN

Bushbuckridge Local Municipality

Integrated Development Plan: Revision 2009/2010-2010/2011-2011/2012

2.2. Principles informing the compilation of the IDP requirements of chapter 5 of the Systems Act which requires:

- (a) The IDP be compiled, adopted and implemented
- (b) The municipality monitors and reviews the implementation of the IDP
- (c) The IDP reviewed and adopted annually to the extent that changing circumstances so demand
- (d) The IDP must be aligned with plans of other spheres of Government; and
- (e) The IDP must reflect priority development needs of communities

2.3. Consultative Process

2.3.1. Municipal Council

Council is the authority on all aspects of the IDP process. After approval by Council, the IDP is submitted to the MEC of Local Government for comments. A copy will also be submitted to the Ehlanzeni District Municipality for information and alignment.

2.3.2 IDP Representative Forum

The forum consists of different stakeholders, interest groups and Councilors. The chairperson of the forum is the **Mayor**. It considers the development priorities, objectives, strategies, projects and the entire plan. Issues are debated and agreed upon for final approval by the Council of Bushbuckridge Local Municipality. The following are categories of members of the IDP representative forum:

- Mayor (Chairperson)
- Speaker
- All 34 Ward Councilors
- 34 PR Councilors
- Municipal Manager
- IDP Manager
- IDP Steering Committee
- Community Stakeholders
- NGO's and Parastatals
- Traditional Leaders
- Other sector representatives as may be identified from time to time.

2.3.3. IDP Steering Committee

The IDP Steering Committee consists of internal Directors, Managers and Head of sector Departments as well as representatives of the District Municipality.



INTEGRATED DEVELOPMENT PLAN

Bushbuckridge Local Municipality

Integrated Development Plan: Revision 2009/2010-2010/2011-2011/2012

Representatives and resource persons from different stakeholders and Parastatals. The chairperson of this committee is the **Municipal Manager**. He often delegates to the IDP Manager. The remaining function of the committee is to formulate the

IDP and its process and submit to the IDP representative forum. The steering committee serves as an advisory committee to the IDP representative forum.

3 LEGAL FRAMEWORK

3.1. Legislative Framework

The Constitution of the Republic of South Africa (Act 108 of 1996) is the supreme law of the country and fundamentally aims to protect human rights and promote democratic governance. The Constitution therefore provides for a new approach to government on national, provincial and local government levels. The new Constitutional model redefines the relationships between the three spheres of government, by replacing the system of a vertical hierarchy of ties, with three overlapping planning process and sets of plans each relating to a different sphere of government. The focus of cooperative governance is however to ensure that scarce resources are used for maximum impact.

In terms of the Local Government: Municipal Systems Act (2000) requires that Municipalities draw up an integrated Development Plan (IDP) - a Strategic Plan, Which all Developments in a municipal area are based upon. The IDP is the principal planning instrument that guides and informs the municipal budget. It is a plan that not only concentrates on other provisions of municipal services, but also seeks to alleviate poverty, boost Local Economic Development, Eradicate unemployment and promote the process of reconstruction and development.

In addition to compiling an I.D.P, it is also a legislative requirement, in terms of the municipal Systems Act and the municipal Finance management Act (2003) that the municipality's I.D.P be reviewed on an annual basis. The aim of the review is to ensure that the municipal planning takes into account changing circumstances.

3.2. National and Provincial Government Strategies

What follows is a brief description of government service delivery targets following by the general outcome goals, key objectives, guiding principles and key development priorities of the Accelerated and Shared Growth Initiative of South Africa (ASGISA), THE National Spatial Development Perspective (NSDP).

Government service delivery targets for the period up to 2014 are crucial and have to be reflected in our service delivery namely:

- Reduce unemployment by half
- Reduce poverty by half
- Provide the skills required by the economy
- Ensure that all South Africans are able to fully exercise their constitutional rights and enjoy the full dignity of freedom
- Provide a compassionate government service to the people



INTEGRATED DEVELOPMENT PLAN

Bushbuckridge Local Municipality

Integrated Development Plan: Revision 2009/2010-2010/2011-2011/2012

- Improve services to achieve a better national health profile and reduction of preventable causes of death, including violent crime and road accidents.
- Position South Africa strategically as an effective force in global relations

3.3 ASGISA Guidelines

The three spheres of government have been working together for some years to elaborate the specific interventions that will ensure that ASGISA succeeds in its purpose, which includes the reduction of the unemployment levels...

Originally the main focus of ASGISA is on:

- Building infrastructure to grow the capacity of our economy.
- Boosting sector of the economy with special potential for faster growth developing the skills we need.
- Addressing inequalities that marginalize the poor in the second economy.
- Continuing with the policies that have created a good climate for growth.
- Making government more effective and efficient.

3.4. The National Spatial Development Perspective (NSDP) Guidelines

The ultimate vision of the NSDP is to:-

- Focus economic growth and employment creation in areas where it will be most effective and sustainable
- Support restructuring where feasible to ensure greater competitiveness
- Foster development on the basis of local potential
- Ensure that all municipalities are able to provide for basic needs.

4 BACKGROUND

This document represents the reviewed Integrated Development Plan (IDP) of the municipality for the year 2009/2010 financial year.

Poverty and unemployment are core development challenges in Bushbuckridge Local Municipality, the majority of people in the municipal area of jurisdiction are unemployed and this poses a big challenge for the municipal economic development. As the Municipality we have adopted a holistic approach in addressing the inter-related socio-economic factors that can contribute to the quality of life for all the people living in the Bushbuckridge Local Municipality.

4.1 Municipality Vision

Bushbuckridge Local Municipality strives for developmental and prosperous life for all.



INTEGRATED DEVELOPMENT PLAN

Bushbuckridge Local Municipality

Integrated Development Plan: Revision 2009/2010-2010/2011-2011/2012

4.2 Municipality Mission

Through accountability, transparency and responsible governance, the municipality commits itself to provide affordable and sustainable services by enhancing community participation.

4.3 Municipality Core Values

- **Accountability**
- **Transparency**
- **Responsible governance**
- **Efficient service delivery**

INTEGRATED DEVELOPMENT PLAN

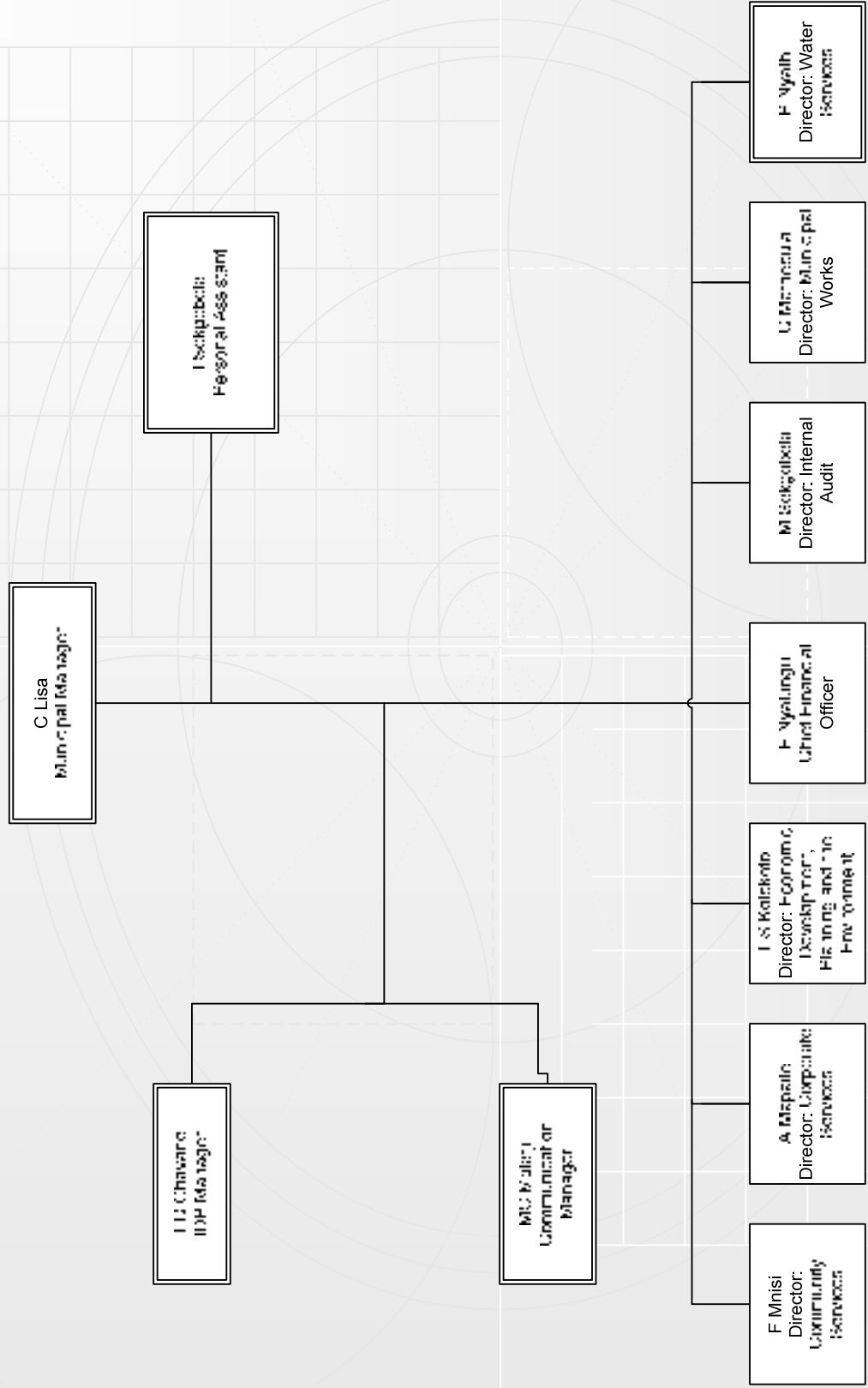


Bushbuckridge Local Municipality
Integrated Development Plan: Revision 2009/2010-2010/2011-2011/2012

Bushbuckridge Municipality

Overarching Structure

Thursday, February 05, 2009





INTEGRATED DEVELOPMENT PLAN

To deal with challenges of service delivery and performance of certain powers and functions, Bushbuckridge Local Municipality has developed a structure, which caters for the following stakeholders:

- ❖ Municipal Manager
- ❖ Chief financial Officer
- ❖ Directorate : Corporate Services
- ❖ Directorate : Community Services
- ❖ Directorate : Economic Development, Planning & Environment
- ❖ Directorate : Municipal Works
- ❖ Directorate : Water Services
- ❖ Directorate : Internal Audit

4.4 The Current Challenges facing the Bushbuckridge Municipality include the following:

- ❖ Poor road network to enable easy movement for the community that will facilitate economic development.
- ❖ Lack of a development strategy for the municipal area based on a proper land audit.
- ❖ Non-corporation of the development strategy into a revised Spatial Development Framework.
- ❖ Lack of sufficient bulk water supply, reservoirs and reticulations.
- ❖ Lack of strategy to attract skilled labour force and to retain the skilled personnel.
- ❖ Inadequate health facilities and poor supply of medicines to clinics.
- ❖ Lack of a reliable and structured waste management plan for waste disposal in the area.
- ❖ Lack of effective debt collection and revenue generating strategies.

SWOT Analysis

INTERNAL FACTORS

Strengths

- The area is located in close proximity to the world famous Kruger National Park, the Maputo sub-corridor and forms part of the Canyon to Kruger biosphere, which makes it attractive for tourism.
- The Municipality has a potential for developing the local economic hub through our indigenous wealth in the form of agricultural farming and tourism.
- The municipality has diversified skilled labour force base to enable growth and development.
- Decentralised service delivery points in the form of the eleven regional offices.
- Potential to economic hub in the areas such as Mkhuhlu, Acornhoek, Thulamahashe and Dwarsloop



INTEGRATED DEVELOPMENT PLAN

Bushbuckridge Local Municipality
Integrated Development Plan: Revision 2009/2010-2010/2011-2011/2012

Weaknesses

- Poor public road infrastructure, facilities and pedestrian access, to enable service delivery and economic development.
- Lack of unified marketing strategy which limit agricultural development
- Lack of appropriate communication systems.
- Lack of economic hub or development centre
- Lack of land tenure strategy to facilitate development.
- poor involvement and benefits in tourism for the local communities
- Lack of development of retention strategy.

EXTERNAL FACTORS

Opportunities

- Proximity to Kruger National Park
- Potential to multi-cultural indigenous tourism points
- Existence of a number of public and private owned game and nature reserves for eco-tourism developments
- Potential to economic growth through agriculture

Threats

- HIV/AIDS pandemic
- Global warming and climate change
- High unemployment rate
- Migrant labour
- High staff turnover
- Uncoordinated land use

5. SITUATION ANALYSIS

5.1. General Background

5.1.1. Location and Characteristics

Bushbuckridge Local Municipality was declared a presidential nodal point by the president of the republic in 2001, it is located in the north-eastern part of the Mpumalanga Province. The municipality is one of the five constituents of the Ehlanzeni District Municipality, and is bounded



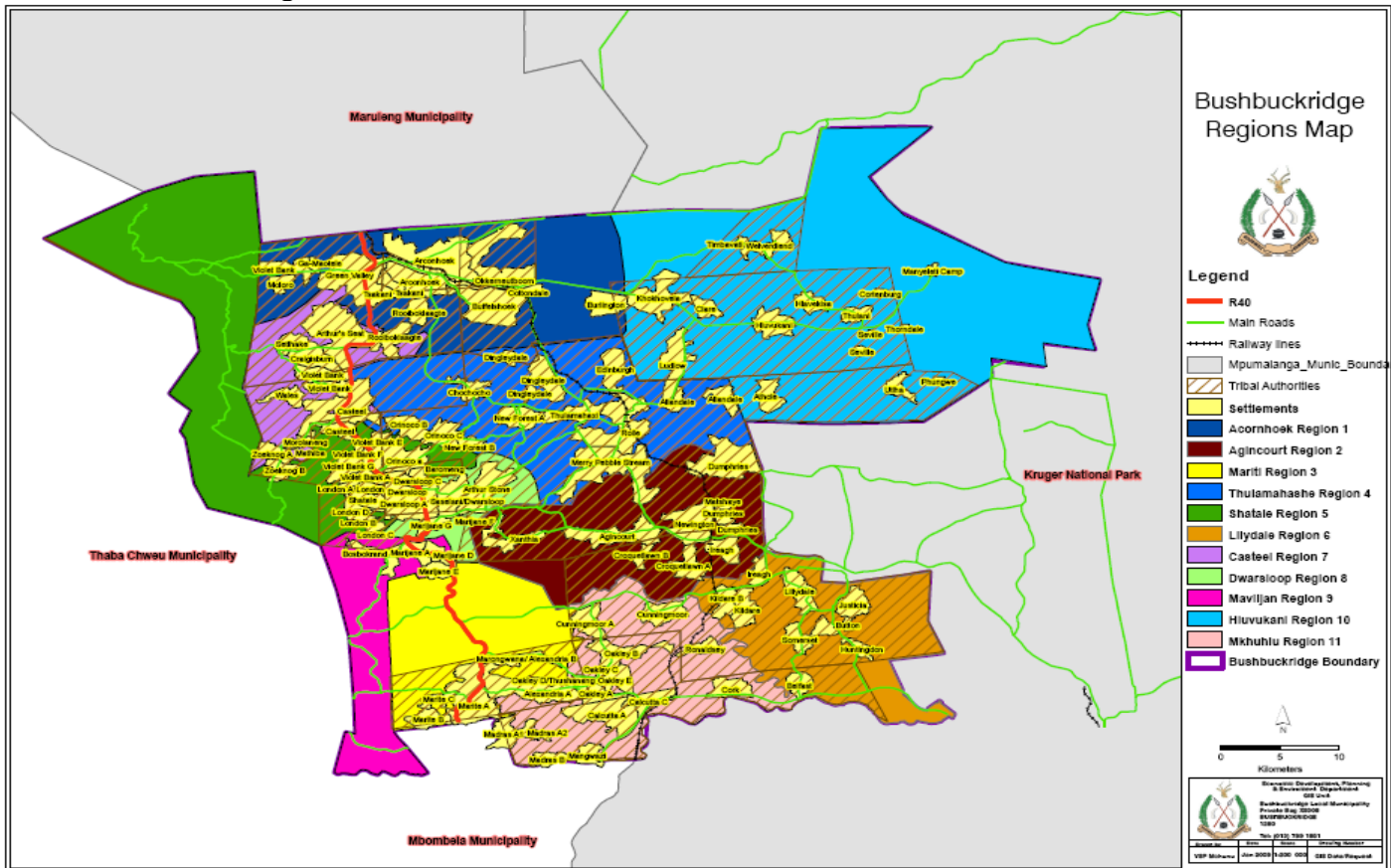
INTEGRATED DEVELOPMENT PLAN

Bushbuckridge Local Municipality
Integrated Development Plan: Revision 2009/2010-2010/2011-2011/2012

by Kruger National Park in the east, Mbombela Local Municipality in the South and Thaba Chweu local municipality in the South West. It is part of the Kruger to Canyon Biosphere. The Municipal area provides a link to economically viable centres in the Lowveld, particularly Hazyview, Hoedspruit, Pilgrim Rest and Graskop. The Municipal Area can therefore be called the gateway to the major tourism attraction points in Mpumalanga and the south eastern part of the Limpopo Province.

The Municipality covers approximately 259 000ha of land area.

Refer to the diagram below:



5.1.2. Socio-Demographic Profile

The main purpose of this section is to provide a good understanding of the key social, economical, Physical and environmental features of the municipal area and their impact on spatial and sustainable development.

5.1.2.1 Social Development

Age and Gender

Accurate population figures remains a challenge, the municipality relies on the information provided by **Statistics South Africa** as the sole provider of the Statistics below:

Population figures:



INTEGRATED DEVELOPMENT PLAN

Gender

- Female : 279,913
- Male : 230,051
- **TOTAL** : **509,964**

Population Grouped

- Black African : 509,109
- Coloured : 400
- Indian or Asian : 238
- White : 217

5.1.2.2 Health

Bushbuckridge Local Municipality has 3 equipped hospitals, 2 health centres, 34 operational clinics and 5 mobile teams. The challenge the municipal faces inadequate medical services in most clinics due to poor supply of medication. These do not dispute the changes that the department has done in the past years in upgrading the service delivered to the communities in other clinics. There are sufficient programs targeting youth, women and disable people in the communities within the Bushbuckridge Local Municipality's jurisdiction. Health is responded to as a major component of service provided by the municipality.

HIV & AIDS

Bushbuckridge Local Municipality as a custodian of service delivery has a mandate to respond to HIV and AIDS as a developmental problem. The municipality envisages promoting good behavioral patterns and practices through activities that are aligned and coordinated to enable sustainable socio-economic and human capacity in responding to challenges in addressing the pandemic.

Further, the struggle against HIV/AIDS needs all the sectors, formations and stakeholders of our society to be involved.

In the municipality, an estimated infection rate is 25% average. Currently there are 2 service points that are accredited as Anti retroviral (ARV) treatment centres. One private clinic (Bhubezi clinic) is providing ARVs. Currently estimations indicate that there are more than 4 200 people taking Anti-retroviral treatment in Bushbuckridge Municipal area. The most infected are the economically actives groups (women & men) between the age of 18 - 40.

5.1.2.3 Safety and Security

The municipality is committed to a free crime environment that seeks to protect the abuse of vulnerable children and women. The Municipality envisages achieving such through the provided facilities in the form of four (4) main police stations, which are strategically located in Thulamahashe, Maviljan, Mkhuhlu, and Acornhoek. Six (6) satellites offices in Mariti, Shatale, Dwarsloop, Lillydale, Casteel and Hluvukani with magistrate courts where main police stations are located. To compliment the facilities, each demarcated ward has community policing forums (CPF) that are active.



5.1.2.4 Education

The municipality values education as an important aspect in the developing community and as a result some vulnerable and child headed families finds it difficult to access basic education. The municipality is committed to provide psycho-social support programs for learners and educators through the facilities provided by the department of education. The municipal area has 213 primary schools, 119 secondary schools (1 NEPAD e-school), 4 combined schools and further education and training institutions.

However, serious problems are experienced in many of these schools including overcrowding, high failure rate that could be attributed to poor infrastructure and facilities. There are other educational facilities which are currently not used for education purposes such as Mapulaneng and Hoxani colleges of Education. Currently there are two community libraries to serve the community of Bushbuckridge municipal area.

5.1.4 ENVIRONMENTAL ISSUES

1. Waste Removal

The Bushbuckridge Local Municipality has erected mobile refuse removal bins for user friendly environmental management strategy to respond to the national framework on environment. Majority of the communities do not have access to refuse removal services and rely on communal dumping areas. Formal waste removal is mostly limited to the formal townships. The Municipality has extended the service of refuse removal to meet the millennium development goal of cleaner and safer environment.

Solid waste disposal remains a challenge within the municipality. There is a need to construct solid wastes disposal sites.

3. Cemeteries

The municipality envisages constructing municipal owned cemeteries in the rural areas to ensure protection of the cemeteries. Majority of rural communities prefer to bury their loved ones in their own yards, which do not take into consideration the effects to hydrological impact. The Municipality is committed to provide necessary infrastructure to already existing and newly identified cemeteries.

5.1.5 Water Supply and Sanitation services

Bushbuckridge Local Municipality has the mandate to provide free basic water service in terms of the National Framework. Water supply to communities remains a challenge. Through the massive program of bulk supply, the municipality aims to improve the lives of the communities and households with provision of multiple sources of water. Linked to water supply problems is poor sanitation, particularly in the densely populated settlements clusters and dispersed small settlements. Through the construction of VIP toilets in households, the Municipality will archive its objective of providing environmentally friendly sanitation services to the people for the promotion of healthy living amongst individuals.

The following information will help in proving necessary statistics

Sanitation

- Flush toilet (connected to sewerage system) : 4,852
- Flush toilet (with septic tank) : 1,375
- Dry toilet facility : 5,904



INTEGRATED DEVELOPMENT PLAN

Bushbuckridge Local Municipality

Integrated Development Plan: Revision 2009/2010-2010/2011-2011/2012

-
- Pit toilet with ventilation (VIP) : 10,408
 - Pit toilet without ventilation : 80,603
 - Chemical toilet : 190

Water

- Piped water inside the dwelling : 14 037
- Piped water inside the yard : 23, 302
- Piped water from access point outside the yard : 71, 030
- Borehole : 3, 512
- Spring : 3, 374
- Dam/pool : 836
- River/stream : 5, 675
- Water vendor : 2, 370
- Rain water tank : 239

Energy

The Bushbuckridge Local Municipality is providing the communities with free basic electricity and alternative source of energy (solar panels & gel). In partnership with ESKOM the Municipality sufficiently provides the community with acceptable standard of electricity, with 90.1% of the households electrified, 0.8% uses paraffin, 7.8% uses candles, and 1.0% solar panels. However, provision in the area need to be upgraded especially in rural areas where interruptions of electricity supply occurs. There is a need to improve the current infrastructure to an acceptable level.

Telecommunications Infrastructure

A large section of the municipal area is provided with formal telecommunications facilities, 70% uses Cell phones, 20% uses fixed lines with 10% rely on public phones. Telecommunications is well provided in big institutions such as hospitals, schools and government departments.

Housing

The Bushbuckridge Local Municipality as a declared nodal point, the communities in the municipal area mostly still living in the traditional mud houses and unstructured houses. The municipality is committed to building safer and quality houses that meets the basic government requirements. The traditional houses are associated with natural disaster and health problems

Transport

The Bushbuckridge Local Municipality aligns with the Ehlanzeni District Transport Plan as per the integrated plan. The Municipality envisages improving the road links network to enable access to service points. The road links network currently do not enable viable mobility for



economic activities to be performed in the nodal area and as a result, the Municipality has planned a construction of a multi-modal taxi rank facilities through the intervention of National Treasury (NDPG).

5.1.5. Economic Development

The Bushbuckridge Local Municipality has a potential for developing the local economic hub through our indigenous wealth in the form of agricultural farming and tourism. Agriculture and tourism can make a meaningful contribution to the local, district and the provincial Gross Domestic Product (GDP) and will have a great potential of creating economic growth and reduce the levels of unemployment.

Employment Opportunities

The employment and unemployment rates are very useful in the compilation of the IDP document in order to determine the extent of planning and decision making in addressing relevant issues and formulating appropriate strategies.

Tourism

Tourism, as already cited above, has a great potential of stimulation of economic growth, taking into account its close proximity to the Kruger National Park (KNP), Manyeleti and various renowned private nature reserves such as Mhala- Mhala, Sabie-Sabie, Phungwe and others located along the boundary of the KNP. The municipal area also falls within the Kruger to Canyon Biosphere, which stretches northwards via Hoedspruit to Tzaneen. According to the Tourism Growth and Development Strategy that was conducted by the Department of Finance and Economic Development, tourism in the area has a competitive advantage and has a potential to contribute significantly towards accelerating growth in the tourism industry.

Agriculture

Agriculture remains the potential economic development platform for the communities of Bushbuckridge through subsistence and animal farming. The Municipality intends to strengthen the existing programs that are aimed at improving the local economic development. Agriculture in the municipal area has a strong competitive advantage in terms of the climate, bio-diversity and number of dams. But this advantage is impacted by problems associated with it such as droughts, veld fires, and rural/bad farming practices. Although commercial agriculture provides bulk of the employment opportunities, approximately half of the population, particularly the youth, is unemployed. The constraints and issues related to agriculture in the municipal area are:

- ❖ Access to viable parcels of arable land;
- ❖ Management of communal grazing land; and
- ❖ Conversion from subsistence to commercial agriculture.



INTEGRATED DEVELOPMENT PLAN

Bushbuckridge Local Municipality
Integrated Development Plan: Revision 2009/2010-2010/2011-2011/2012

6. DEVELOPMENT STRATEGIES

Community and Stakeholders Priority Issues

The following table outlines and summaries the challenges and service delivery priorities per ward:

	REMARKS	WARD
1. Water	<ul style="list-style-type: none"> • Insufficient water • Insufficient supply • Reticulation 	All Wards 1-34
2. Sanitation	<ul style="list-style-type: none"> • Insufficient sanitation • Lack of bulk sewerage infrastructure • VIP Toilets 	All Wards 1-34
3. Transport and Communication	<ul style="list-style-type: none"> • Lack of telephones • Lack of information centres • Traffic services • Establishment and upgrading of bus and taxi ranks 	1,2,8,9,11,13,21,22,25,30,31,34
4. Energy	<ul style="list-style-type: none"> • Insufficient electrification • Extensions • Power Failure • Use of alternative energy sources 	2,5,6,10,11,12,13,14,15,16,18,21,23,24,27,31,33,34
5. Economic Growth and Development	<ul style="list-style-type: none"> • Job creation • Construction of business centres • Upgrading of land tenure • Grazing land • Market Stalls • Farming • Cultural villages • Market opportunities 	All Wards 1-34
6. Disabled	<ul style="list-style-type: none"> • User friendly schools for disabled • Skills development 	1,6,19
7. Roads / Streets and bridges	<ul style="list-style-type: none"> • Opening of streets • Rehabilitation streets • Re-gravelling and grading 	All Wards 1-34



INTEGRATED DEVELOPMENT PLAN

6.2. Service Delivery Backlog

55 000 households from the estimated 120 000 as estimated by census 2001, still do not have affordable access to portable water supply. The municipality could only afford to reticulate water to 27 500 household form 2004 to 2006.

This indicates a backlog of 27 500 households per annum.

The municipality is refurbishing and drilling new boreholes to arrest the backlog. More villages will be reticulated from 2006/2007 financial year. Water tankers are used to deliver water to areas with a pressing shortage of water.

50 000 households still use unacceptable sanitation methods whereby 80% of the estimated 120 000 households' still use pit latrines. A program of constructing VIP toilets was developed and stringently adhered to meet the challenge of building VIP toilets in 3 306 RDP houses from 2007/8.



7. DEVELOPMENT STRATEGY PHASE

7.1. The municipal objectives and strategies should focus on the strategic intent of the municipality in achieving the vision and mission in line with the identified priority issues and program.

	Priority issues	Goals	Strategies
1	Water	To meet the Presidential target for the Bushbuckridge population, provide potable water by 2014, and increase water access to emerging farmers thereafter	<p>Strategy A: Provision of potable water by the municipality through bulk supply, reticulation, purification and storage infrastructures</p> <p>Strategy B: Refurbishing of dysfunctional water Infrastructure</p> <p>Strategy C: Installing infrastructure where it does not exist</p> <p>Strategy D: Establishing partnerships with communities for installation of metered water supply (cost recovery)</p> <p>Strategy E: Facilitate the erection and upgrading of water catchments and facilities for agricultural purposes</p>
2	Sanitation	To meet the Presidential target for the Bushbuckridge population, being VIP's or water-borne by 2014	<p>Strategy A: Implement an EPWP VIP project to erect panel based structures</p> <p>Strategy B: To provide water borne sewerage systems as adequate bulk water becomes available</p>
3	Roads	To improve condition of access roads and internal streets in all	<p>Strategy A: Upgrade and rehabilitate access roads and internal main roads</p>

INTEGRATED DEVELOPMENT PLAN



Bushbuckridge Local Municipality
Integrated Development Plan: Revision 2009/2010-2011-2011/2012

	Priority issues	Goals	Strategies
		settlements and towns, improve condition of gravel roads, provide sufficient storm-water drainage for access roads and internal main streets and roads, and provide for tarred district and provincial roads	<p>Strategy B: Upgrading and re-gravelling as part of the road upgrading and rehabilitation program</p> <p>Strategy C: Construction of storm-water drainage as part of the road upgrading and maintenance program</p> <p>Strategy D: Construction of district and provincial tarred roads</p>
4	Transport	Increase access to public integrated transport system.	<p>Strategy D: Ensure that transport and communication systems are user friendly to disabled people</p> <p>Strategy E: Compile a transport plan and align it with national policies</p> <p>Strategy F: Establish traffic centers at Mkhuhlu, Acornhoek and Mapulaneng</p> <p>Strategy G: Reduce pedestrian and commuters accidents</p>
5	Telecommunication	To increase access to communication and transport services by 2014	<p>Strategy A: Facilitate the provision of public phones to all communities of Bushbuckridge</p> <p>Strategy B: Facilitate the provision of post offices within access to all communities</p> <p>Strategy C: Provide communication services to communities/villages.</p>
6	Energy	To achieve access to sustainable energy by 2012	<p>Strategy A: Draw up a priority list for electrification of settlements</p> <p>Strategy B: Have all settlements within BLM provided with electricity by 2012</p> <p>Strategy C: Facilitate the upgrading of electricity stations to minimize power failure.</p>

INTEGRATED DEVELOPMENT PLAN



Bushbuckridge Local Municipality
Integrated Development Plan: Revision 2009/2010-2010/2011-2011/2012

	Priority issues	Goals	Strategies
7	Local Economic Development	Ensure economic growth and reduce unemployment rate in the Bushbuckridge municipal area.	<p>Strategy D: Acquire electricity supply license and service its communities</p> <p>Strategy E: Provision of floodlights as well as streetlights.</p> <p>Strategy A: Create an environment that is conducive for economic growth.</p> <p>Strategy B: Promote tourism by establishing arts and cultural centres</p> <p>Strategy C: Promote communal farming projects</p> <p>Strategy D: Revive and upgrade small-scale commercial projects</p> <p>Strategy E: Ensure job creation through sustainable projects with more focus on disabled and gender balance</p> <p>Strategy F: Implement ISRDP anchor projects</p>
8	Health	To provide and maintain basic health services to reduce mortality rates and notifiable diseases	<p>Strategy A: To increase access to primary health care to all communities</p> <p>Strategy B: To reduce the spread of HIV/AIDS</p>
9	Social development	Provide access to social services and reduce teenage pregnancy and domestic violence by 2015	<p>Strategy A: To reduce the levels of teenage pregnancy by developing programs that, are aimed at educating the community.</p> <p>Strategy B: To reduce domestic violence activities by developing educational programs</p> <p>Strategy C: To monitor and support welfare projects those are currently operational.</p>

INTEGRATED DEVELOPMENT PLAN



Bushbuckridge Local Municipality
Integrated Development Plan: Revision 2009/2010-2011-2011/2012

	Priority issues	Goals	Strategies
10	Safety & Security	<ul style="list-style-type: none"> • To reduce crime rate and increase police visibility • To increase access to emergency services to people of Bushbuckridge and reduce mortality accidents 	<p>Strategy A: To reduce the crime rate through safety cluster forums</p> <p>Strategy B: To provide accident response unit with a toll free hotline number and provide 24 hours ambulance services to all communities</p> <p>Strategy D: Upgrade existing fire station and establish extra services in other areas.</p>
11	Environmental Issues and Waste Management	Projects to achieve Presidential targets for refuse collection & disposal services- 2012	<p>Strategy A: Installation and improvement of sewerage systems in the towns within the municipality</p> <p>Strategy B: Provision of pit latrines</p> <p>Strategy C: Enforcement of applicable environmental laws</p> <p>Strategy D: Enforcement of compliance with the municipal development plan</p> <p>Strategy E: Promotion of environmental campaigns</p> <p>Strategy G: Identify and expose/market heritage areas e.g. biosphere, wetlands etc.</p> <p>Strategy H: Promote the establishment of game lodges and other tourist attraction facilities</p>
12	Land Matters and Physical Planning	Municipality to allocate 10% of land p.a. to the population of Bushbuckridge for development purposes, in the next five, ensure that have land tenure rights of their choice and promote	<p>Strategy A: Accelerate land allocation for development</p> <p>Strategy B: Identify areas, which need immediate attention in terms of tenure security</p> <p>Strategy C: Encourage the people in Bushbuckridge living in tribal settlements to actively participate in the</p>

INTEGRATED DEVELOPMENT PLAN



Bushbuckridge Local Municipality
Integrated Development Plan: Revision 2009/2010-2010/2011-2011/2012

	Priority issues	Goals	Strategies
		harmonious land development administration	<p>Tenure Reform Program of the Department of Land Affairs</p> <p>Strategy C: Develop a land use management plan for the municipality</p> <p>Strategy D: Have effective and efficient land development planning and administration</p>
13	Housing	Projects to achieve Presidential targets for housing - 2012	<p>Strategy A: Address disaster housing backlog fully in 2 years time</p> <p>Strategy B: Upgrading/renovation of unsafe (risky houses)</p> <p>Strategy C: Identify land for building middle to high-income housing and tourist accommodation</p>
14	Education	<ul style="list-style-type: none"> • Improve or sustain ABET literacy class • Improve school management systems • Projects to achieve Presidential targets for education - 2008 basic primary 	<p>Strategy A: Contribute to the creation effective and efficient learning environment</p> <p>Strategy B: Instill culture of teaching/learning to educators and learners</p> <p>Strategy C: contribute to conduct capacity building for educators</p> <p>Strategy D: Provide vocational guidance to learners</p> <p>Strategy E: Increase utility resources and accessibility of farm schools</p> <p>Strategy F: contribute in the Improvement and sustain ABET classes by 80% in five years time</p> <p>Strategy G: contribute to Improve schools management in the Municipal Jurisdiction.</p>
15	Community Facilities	To provide sufficient, well-maintained and accessible	<p>Strategy A: Provide MPCCs to all communities</p> <p>Strategy B: Upgrade existing community facilities and</p>

INTEGRATED DEVELOPMENT PLAN



Bushbuckridge Local Municipality
Integrated Development Plan: Revision 2009/2010-2010/2011-2011/2012

	Priority issues	Goals	Strategies
		community facilities throughout the municipality.	establish new ones
16	Institutional Capacity/Arrangements	Projects to achieve Presidential targets for BLM capacitating of employees - 2010	<p>Strategy A: Implement recommended organizational structure of the municipality</p> <p>Strategy B: Formulate and implement proper procurement policy</p> <p>Strategy C: Speed up the transference of delegated functions to the municipality</p>
17	Sports and Recreation	Projects to achieve Presidential targets for sport & recreation - 2012	<p>Strategy A: Develop a comprehensive sport and recreation policy for the municipality</p> <p>Strategy B: Have secure and well maintained sport and recreation amenities, e.g. stadiums, village level multi-purpose sport complex and community halls</p> <p>Strategy C: Promote performing arts within the municipality</p> <p>Strategy D: Develop visual arts (tourism)</p>

The municipal **objectives** and **strategies** should focus on the strategic intent of the municipality in achieving the vision and mission in relation to the identified **priority issues** and **projects respectively**.



8.1. KEY PERFORMANCE AREAS AND STRATEGIES

KPA: Infrastructure and Services						
Goal: To develop and upgrade infrastructure that will assist the municipality to provide easy access to affordable and sustainable services and facilitate economic development						
Priority Issue	Objective	Measures		Target	Date	Programme Budget Total Projects Allocation
		Output	Outcome			
Water Infrastructure	Projects to achieve Presidential targets	All households provided with quality affordable water	80% satisfaction rate for household having access to quality water	100% of the total households in the municipal area	2010	R 1,135B
Sanitation	Provide an adequate and appropriate sewer systems for the urban part of the municipality as well as VIP's for the rural conditions	60% of households with appropriate sewer systems for both rural and urban communities	80% of households having access to basic sanitation	100% of the total households in the municipal area	2010	R 721m
Electrification of Households	Provide affordable and reliable electricity to urban and rural areas in the municipality	80% of electrified homes for households earning incomes between R800 and R110	80% of households with affordable and reliable electricity	100% of total households with electricity in the municipal area	2012	R 89m
Roads and Bridges	Provide safe and appropriate road and storm water networks	Safe road and storm water networks	Improved accessibility and	Safe road and storm water	2014	R 1,011m



INTEGRATED DEVELOPMENT PLAN

KPA: Infrastructure and Services						
Goal: To develop and upgrade infrastructure that will assist the municipality to provide easy access to affordable and sustainable services and facilitate economic development						
Priority Issue	Objective	Measures		Target	Date	Programme Budget Total Projects Allocation
		Output	Outcome			
	in the municipal areas		safe roads between areas	network		
Waste Management and Refuse Removal	Provide a safe, effective and economical waste management and refuse disposal system	Households with access to waste management and refuse disposal system (per area or specific area and include time frame	90 % households satisfaction index	100% households	2012	R 101m
Transport	Promote an effective and affordable transport system to cater for the whole of the municipal area	Transport infrastructure and system projects implemented	Improved transport accessibility between the areas	Transport infrastructure and system projects	2010	R13m
Housing	Ensure that the housing need of people in the municipal area is met	Number of houses constructed	Number of households with basic housing	100% households with housing	2012	R 726m
Cemetries	Provide safe, appropriate and accessible burial space/cemetery space in the municipal area	Number of hectares of land acquired for cemeteries	Number of complaints from bereaved families	< 1 family with a complaint	2012	R 121M
Posts and Telecommunications	To ensure that a basic communication infrastructure is within reach of all the	Number of projects on basic communication infrastructure	Improved access to communication by inhabitants in the	Communication infrastructure	2010	R 3m



INTEGRATED DEVELOPMENT PLAN

KPA: Infrastructure and Services						
Goal: To develop and upgrade infrastructure that will assist the municipality to provide easy access to affordable and sustainable services and facilitate economic development						
Priority Issue	Objective	Measures		Target	Date	Programme Budget Total Projects Allocation
		Output	Outcome			
	inhabitants in the municipal area	implemented	municipal area	projects		
Land Ownership and Land Use Management	Ensure lawful security of tenure	20% compliance with land tenure legislation	30 % of land security tenure	100% compliance of land tenure legislation	2010	R207m

8.2. Economic Development

KPA: Economic Development						
Goal: To accelerate economic development leading to increase in job creation and poverty alleviation						
Priority Issue [Programme]	Objective	Measures		Target	Date	Programme Budget Total Projects Allocation
		Output	Outcome			
Local Economic Development	Ensure economic growth in all sectors of the economy in order to half poverty	3% of economic growth in all sectors of the economy	3% of economic growth or GDP contribution to the province	3% GDP for the area	2014	R 682m



8.3. Community Services

KPA: Community Services						
Goal: To improve the standard of living, literacy, healthcare and safety for the community of Bushbuckridge						
Priority Issue [Programme]	Objective	Measures		Target	Date	Programme Budget
		Output	Outcome			
Health	Promote the development of a healthy community and an effective healthcare environment	20 awareness programmes and campaigns conducted	<ul style="list-style-type: none"> ▪ 50 reduction in cases of deadly diseases ▪ Change in community behaviour 	< 15 cases a month	2012	R 240m
Social Welfare	Ensure improved living standards and promote humane living conditions for every member of society	80 of households with improved living standards and conditions	85% of households satisfaction index	5% increase in the household satisfaction index	See LED	See LED
Education	Promote the provision of effective education to all learners and equip people to lead a meaningful life	Number of schools and training centres established in the area	Number of learners and scholars with accredited qualifications	1000 Learners and 2000 scholars	2008, basic primary, other 2011	R 354m
Safety and Security	Ensure a safe, secure and humane environment for inhabitants of the municipality	20% reduction in crime related incidents	30% reduction in crime statistics	30% reduction	2010	R 88m

INTEGRATED DEVELOPMENT PLAN



Bushbuckridge Local Municipality
Integrated Development Plan: Revision 2009/2010-2010/2011-2011/2012

KPA: Community Services						
Goal: To improve the standard of living, literacy, healthcare and safety for the community of Bushbuckridge						
Priority Issue [Programme]	Objective	Measures		Target	Date	Programme Budget Total Projects Allocation
		Output	Outcome			
Sports and Recreation	Ensure accessibility to Sport and Recreation facilities for all the inhabitants of the municipal area	Number of sports and recreation facilities developed	Number of inhabitants having access to sports and recreation events at the municipal area facilities	100000 inhabitants attending major sporting and recreational events	2012	R 58m
Arts and Culture	Social and cultural integration as well as conservation of important cultural and historic sites	Preservation and maintenance of identified cultural and historical sites			2010	Sector Dept.
Emergency Services	Ensure fire fighting and ambulance services which are safe, secure, humane, prompt and effective	Response time to emergencies in minutes	Improved response time to emergencies in minutes	At least 15 – 25 minutes for each category of emergency	2010	EDM
Environmental Management	Ensure that the general environment is protected and promoted in a sustainable and ongoing way	Environmental Assessment Plan	60% achievement of environmental targets in the Environmental Assessment Plan	70% target achievement	2010	R 16M



8.4. Institutional Transformation

KPA: Institutional Transformation						
Goal: To cultivate institutional performance driven culture in order to achieve the municipal strategic objectives						
Priority Issue [Programme]	Objective	Measures		Target	Date	Programme Budget Total Projects Allocation
		Output	Outcome			
Training and Skills Development	Improve employee skills and competencies	100% of employees developing Personal Development Plan targets	60% of performing employees contributing to productivity	75% of employees	2010	R 2m
Recruitment to fill vacant post	Recruitment of competent and skilled personnel	45 posts filled	95% reduction in vacancy rate	15 employees at management level	2010	R 15M
Organisational Infrastructure	Implement and upgrade computer systems	ICT Plan implementation	Uptime availability and function of the system	98% uptime and running of the sys.	2008	R 1M



8.5. Democracy and Governance

KPA: Democracy and Governance						
Goal: Ensure an efficient and sustainable municipality in compliance with the Municipal Finance Management Act, Municipal Systems Act and other related legislative guidelines						
Priority Issue [Programme]	Objective	Measures		Target	Date	Programme B budget Total Projects Allocation
		Output	Outcome			
Service Delivery Standards (Batho Pele)	Implementation of the Batho-Pele Principles	Batho-Pele Plan	Compliance with customer standards	100% compliance and customer satisfaction	2010	R 1.8m
Performance Management Systems	Develop appropriate key performance indicators	Number of quality key performance indicators	Number of KPIs used for reporting the IDP	According standards	2010	R 4.7m

8.6. Financial Management

KPA: Financial Management						
Goal: Improve Revenue generation; and that the is a sound financial management system in compliance with the municipal financial management system						
Priority Issue [Programme]	Objective	Measures		Target	Date	Programme Budget Total Projects Allocation
		Output	Outcome			
Financial Management	Improve debtor revenue	Debtors revenue ratio	Improved financial rating of the municipality	2% and below 8%	30 June 2009	



Annexure A 8 Institutional Priority Issues

8.4. Institutional Transformation

Training and Skills Development

For good governance and professional service delivery, the municipality has developed a skill development plan for all employees. What remains is the implementation of the plan, which is planned to start during 2008/09.

Staff Component and Appointments

Staff Component and Appointments needs the implementation of the Employment Equity Plan, which was adopted by Council by June 2006.

The main challenge is the effective implementation of the EEP at management level whereby only one female has been appointed amongst six males.

Organisational Infrastructure/Assets

Lack of office space militates against efficient management of organisational assets. The extension of the new municipal complex will arrest this inefficiency.

8.5. Democracy and Governance

Service Delivery Standards (Batho Pele Principles)

Bushbuckridge municipality, with all its service delivery challenges, is obliged to develop a Service Delivery Charter and a Service Delivery Improvement Plan to ensure efficiency and good governance. Adherence to Batho Pele is possible if service delivery policies are developed and implemented.

Performance Management Systems:

A Performance Management system was adopted by June 2007. This is a milestone towards adequate service delivery.

8.6. Financial Management

Financial Management: There is a need to develop effective billing and debt collection mechanisms and income generating strategies.

ANNEXURE B 9 INTEGRATED PLANS

Bushbuckridge Municipality undertakes to submit its sector plans to relevant stakeholders during 2009/10.



9.1 Operational 5 Year Service Delivery and Budget Implementation Plan

The five-year operational plan will be finalized soon after the adoption of the adoption of the IDP to guide the Municipality and all other relevant stakeholders with regards service delivery to communities.

9.2 5 Year Financial Plan

The five-year Financial Plan, which will react to the five-year operational plan will be made available after the adoption of the budget and the IDP.

9.3 Capital Investment Programme

Capital Investment Programme – see section 8.

9.5 Spatial Planning and related strategic planning

9.5.1 Spatial Development Framework

A municipal Spatial Development Framework (SDF) was noted by Council in June 2006. The SDF needs to be revised in order to comply with higher order spatial planning frameworks and changed circumstances. In order to achieve this, a land audit and a State of the Environment Report (entire environment) must be undertaken to inform the SDF. Subsequently, the SDF will give direction and influence the development of a proper Land Use Management System

9.5.2 State of Environment Report

During 2007/2008, the Bushbuckridge Municipality initiated a project to draft a State of Environment Report (SOER) covering not only the natural environment, but also the physical and socio-economic situation in Bushbuckridge. The outcomes of this study will provide reliable base-line information for future planning and management of the area. It will be used to improve all strategic planning within the municipal area, including the IDP, SDF and infrastructure planning. The project will be continued and hopefully finalised in the 2008/2009 financial year.

9.5.3 Land Audit

During 2007/2008 the Bushbuckridge Municipality also appointed a Service Provider to undertake a proper Land Audit of all land parcels in the municipal area. It will update the existing GIS of the municipality and provide clarity about property descriptions and ownership regarding the various settlements within the municipal area. The project will be continued and hopefully finalised in the 2008/2009 financial year.

9.5.4 An integrated Environmental Implementation Plan

Bushbuckridge consists of *inter alia* beautiful natural areas of high conservation-worthy status. It also forms part of the Kruger to Canyon Biosphere Reserve. However, in the absence of a proper sense of where the “no-go” areas are, and on the other hand where development can safely take place, the municipality (and other authorities) take the risk of allowing development and infrastructure development on land which should rather be conserved. The municipality therefore appointed a Service Provider to undertake this very important study. The project will be continued and hopefully finalised in the 2008/2009 financial year.



9.5.5 Population and address list survey

The municipality intends to appoint a Service Provider to update the population figures of the municipality, and to clarify uncertainty about the exact population figure for the area. The project will be undertaken in the 2008/2009 financial year, but probably only be finalised in the 2009/2010 financial year.

9.5.6 Land Use Management System

The municipality appointed a Service Provider to draft a Land Use Management System for the municipality, including proper zoning maps for each of the regions. This will assist the drafting of a valuation roll, the managing and allocation of land use rights and the construction of buildings and structures in the municipal area.

9.5.7 Integrated Human Settlement policy

An Integrated Human Settlement Policy differs from a Housing Strategy in that will address also the social infrastructure necessary to provide a sustainable community. It will therefore also address educational, social and health requirements of the communities. New initiatives of national government (e.g. Breaking New Ground and sustainable livelihoods), as well as the complexity of housing provision in the Bushbuckridge area, necessitated the drafting of a proper Human Settlement Strategy for the Bushbuckridge area. This project has been initiated in the 2008/2009 financial year and will be continued in the 2009/2010 financial year.

9.5 Integrated Socio-Economic Programme/Plan

9.5.1 LED Strategy

This strategy informs role players on LED programmes that can promote job and wealth creation. The strategy was adopted by Council in June 2006. Projects identified in the strategy were included in section 8 below, IDP Projects.

9.5.2 HIV/AIDS

The HIV/AIDS Plan which provides a programme for all community awareness campaigns has been adopted by Council.

9.5.3 Gender and Equity

The plan was adopted by Council in June 2006.

9.6 Integrated Water Services Development Plan

The updated WSDP together with the Section 78 process is in progress and will be adopted by Council in September 2007.

9.7 Integrated Environmental Programme/Plan

The Integrated Environmental Plan will be developed during the 2007/8 financial year to direct Municipal efforts in addressing environmental related issues in a manner that complies with legislative requirements.



9.8 Integrated Institutional Programme/Plan

The Municipality's Integrated Institutional Plan will be adopted by Council by June 2008 to guides recruitment and human resource development initiatives.

9.9 Disaster Management Plan

The updated WSDP was adopted in June 2008.

9.10 Performance Management, Monitoring and Evaluation System

In line with the IDP, the Performance Management, Monitoring and Evaluation System, which will serve as a critical guide to Municipal performance within the scope of service delivery mechanisms, was adopted in June 2007.

9.11 Human Settlement Plan

The Human Settlement Plan was adopted in June 2008

9.12 Integrated Transport Plan

The Municipality is currently busy with the Integrated Transport Plan, which will align with the District and Provincial plan. The Plan has to be adopted by the Council before the end of the next Financial year (2010/11).



INTEGRATED DEVELOPMENT PLAN

10. Summary of Projects and Budget

The below information will ensure ensure that Key Performance areas are easily set and achieved through proper implementation and monitoring.

Category	2007/ 2008	2008/ 2009	2009/ 2010	2010/ 2011	2011/ 2012	2012/ 2013	2013/ 2014	TOTALS
WATER	357,195,200	174,500,000	531,695,200					106,339,0400
SANITATION	277,456,963	29,704072	13,437,881	128,666				320,598,916
ROADS, BRIDGES & INTERNAL STREETS	269,900,000	208,800,000	158,139,287	158,139	97,170	94,463	47,663	906,739,287
ELECTRICITY	46,631,000	63,434,493	33,930,767	4,934	4,934			143,996,260
WASTE DISPOSAL	10,500,000	3,000,000	33,000	33,000				13,566,000
HOUSING	102,240,000	289,547,500	167,169,371	167,169	113,745			467,221,425
SAFETY & SECURITY	27,000,000	65,500,000						92,500,000
EDUCATION	64,681,000	16,850,000	112,923	75,578				233,369,501
HEALTH	123,000,000	212,600,000	1,311,000,000	64,000	46,000			466,810,000
LAND USE PLANNING	71,000,000	155,000,000	12,000,000	7,000				288,007,000
LED	261,000,000	134,500,000	70,500,000	65,265	32,265	16,000	1,000	466,114,530
INSTITUTIONAL DEVELOPMENT	27,800,000	7,520,000	7,520					35,327,520
SPORT & RECREATION	61,018,400	25,7000,000	26,000,000	14,500	3,000			112,735,900
COMMUNITY SUPPORT	46,000,000	68,609,014	5,000,000	76,857	71,857			119,757,728
Social Development	40,000,000							40,000,000
TELEPHONES	11,000,000	500	1,000					11,015,000
TRANSPORT	53,500,000	9,000,000	5,000,000					67,500,000
TOTALS	1,549,922,563	1,695,565,579	2,330,996,949	795,108	368,971	110,463	48,663	4,382,649,953



BUSHBUCKRIDGE LOCAL MUNICIPALITY

WATER PROJECTS

Project ID	Project Name	Project Location	Project Beneficiaries	Project Objective	KEY Performance Indicator	Period Budget 2009/2010	Period Budget 2010/2011	Budget 2011/2012	Source of Funding	Implementing Agency
BLMW001	Construction of bulk distribution network	Acornhoek	Acornhoek Okkernooitboom Setlhare Buffelshoek Moloto	Provision of Water	Access of water	14 000, 000			MIG	BLM
BLMW002	Bulk main Terminal branch system (Tsakane)	Acornhoek	Tsakane, Maripe, Brooklyn, Boelang	Provision of Water	Access of water	8, 200, 000			MIG	BLM
BLMW003	Water reticulation	Mariti	Alexandria	Provision of Water	Access of water		1,000,000		EQ	BLM
BLMW004	Reticulation and yard meter connection	Shatale	Relani C	Provision of Water	Access of water		3,000,000		EQ	BLM
BLMW005	Construction of Concrete Reservoir	Acornhoek	Acornhoek	Provision of Water	Access of water		1,000,000		EQ	BLM
BLMW006	Construction of Concrete Reservoir	Acornhoek	Boelang	Provision of Water	Access of water		1,000,000		EQ	BLM
BLMW007	Construction of Br pipe, Brooklyn command to Ga-Boelang	Acornhoek	Boelang	Provision of Water	Access of water		1,500,000		MIG	BLM
BLMW008	Reticulation and yard meter connection	Acornhoek	Boelang	Provision of Water	Access of water		1,500,000		EQ	BLM
BLMW009	Reticulation and yard meter connection	Acornhoek	Bophelong	Provision of Water	Access of water			2,000,000	EQ	BLM

INTEGRATED DEVELOPMENT PLAN



Bushbuckridge Local Municipality
Integrated Development Plan: Revision 2009/2010-2010/2011-2011/2012

BLMW010	Construction Pump stations	Acornhoek	Brooklyn	Provision Water	of	Access water			800,000			EQ	BLM
BLMW011	Construction of Command reservoir	Acornhoek	Brooklyn	Provision Water	of	Access water			2,000,000			EQ	BLM
BLMW012	Construction of Command reservoir	Acornhoek	Brooklyn	Provision Water	of	Access water			2,000,000			EQ	BLM
BLMW013	Refurbishment of water reticulation and yard meter connection	Acornhoek	Brooklyn	Provision Water	of	Access water			2,000,000			EQ	BLM
BLMW014	Construction of bulk pipe from Tintswalo to Buffelshoek	Acornhoek	Buffelshoek	Provision Water	of	Access water			4,104,000			MIG	BLM
BLMW015	Refurbishment of branch pipe from mainline to reservoir	Acornhoek	Buffelshoek	Provision Water	of	Access water			327,522			EQ	BLM
BLMW016	Reticulation and yard meter connection	Acornhoek	Buffelshoek	Provision Water	of	Access water					3,000,000	EQ	BLM
BLMW017	Reticulation and yard meter connection	Acornhoek	Burlington	Provision Water	of	Access water		500,000				EQ	BLM
BLMW018	Reticulation and yard meter connection	Acornhoek	Ceko	Provision Water	of	Access water		1,500,000				EQ	BLM
BLMW019	Reticulation and yard meter connection	Acornhoek	Cottondale	Provision Water	of	Access water					3,000,000	EQ	BLM
BLMW020	Reticulation and yard meter connection	Acornhoek	Happy Dam	Provision Water	of	Access water			8,000,000			EQ	BLM
BLMW021	Construction Reservoir	Acornhoek	Jameyana	Provision Water	of	Access water			6,102,786			EQ	BLM

INTEGRATED DEVELOPMENT PLAN



Bushbuckridge Local Municipality
Integrated Development Plan: Revision 2009/2010-2010/2011-2011/2012

BLMW022	Construction of Reservoir	Acornhoek	Jerusalem	Provision Water	of	Access water	of		2,000,000			EQ	BLM
BLMW023	Construction of Pipe Main line to reservoir	Acornhoek	Ka-Nkomo	Provision Water	of	Access water	of		5,401,720			MIG	BLM
BLMW024	Water reticulation	Acornhoek	Ka-nkomo	Provision Water	of	Access water	of			1,000,000		EQ	BLM
BLMW025	Construction of Reservoir	Acornhoek	Ka-Zitha	Provision Water	of	Access water	of		3,822,374			EQ	BLM
BLMW026	Reticulation and yard meter connection	Acornhoek	Ka-Zitha	Provision Water	of	Access water	of		3,894,337			EQ	BLM
BLMW027	Reticulation and yard meter connection	Acornhoek	Kgapamadi	Provision Water	of	Access water	of			3,000,000		EQ	BLM
BLMW028	Water reticulation	Acornhoek	Matsikitsane (fenyana)	Provision Water	of	Access water	of	500,000				EQ	BLM
BLMW029	Reticulation and yard meter connection	Acornhoek	Khalanyoni	Provision Water	of	Access water	of			3,000,000		EQ	BLM
BLMW030	Reticulation and yard meter connection	Acornhoek	Madile	Provision Water	of	Access water	of			3,000,000		EQ	BLM
BLMW031	Construction of Pump Stations to reservoir	Acornhoek	Madile (Tsakane)	Provision Water	of	Access water	of		8,000,000			MIG	BLM
BLMW032	Reticulation and yard meter connection	Acornhoek	Mamelodi	Provision Water	of	Access water	of			3,000,000		EQ	BLM
BLMW033	Reticulation and yard meter connection	Acornhoek	Mapaleng	Provision Water	of	Access water	of			3,000,000		EQ	BLM

INTEGRATED DEVELOPMENT PLAN



Bushbuckridge Local Municipality
Integrated Development Plan: Revision 2009/2010-2010/2011-2011/2012

BLMW034	Water reticulation	Acornhoek	Maromeng Happy dam	Provision of Water	Access of water			4,000,000		EQ	BLM
BLMW035	Bulk water supply	Acornhoek	Masingitana	Provision of Water	Access of water			2,000,000		MIG	BLM
BLMW036	Reticulation and yard meter connection	Acornhoek	Masingitana	Provision of Water	Access of water				3,000,000	EQ	BLM
BLMW037	Reticulation and yard meter connection	Acornhoek	Mohlatsi	Provision of Water	Access of water				3,000,000	EQ	BLM
BLMW038	Reticulation and yard meter connection	Acornhoek	Mooiset	Provision of Water	Access of water			3,000,000		EQ	BLM
BLMW039	Reticulation and yard meter connection	Acornhoek	Morekeng	Provision of Water	Access of water				3,000,000	EQ	BLM
BLMW040	Reticulation and yard meter connection	Acornhoek	Morele	Provision of Water	Access of water			3,000,000		EQ	BLM
BLMW041	Water reticulation	Acornhoek	Moloro	Provision of Water	Access of water		1,000,000			EQ	BLM
BLMW042	Water reticulation	Acornhoek	Nkotobona	Provision of Water	Access of water		500,000			EQ	BLM
BLMW043	yard connection	Acornhoek	Orpengate RDP	Provision of Water	Access of water			8,000,000		EQ	BLM
BLMW044	Reticulation and yard meter connection	Acornhoek	Plaza View	Provision of Water	Access of water			5,000,000		EQ	BLM
BLMW045	Reticulation and yard meter connection	Acornhoek	Powerline	Provision of Water	Access of water			3,000,000		EQ	BLM
BLMW046	Construction of Concrete Reservoir	Acornhoek	Rooboklaagte A	Provision of Water	Access of water			1,000,000		EQ	BLM

INTEGRATED DEVELOPMENT PLAN



Bushbuckridge Local Municipality
Integrated Development Plan: Revision 2009/2010-2010/2011-2011/2012

BLMW047	Construction of Branchline from main line Pipe to reservoir	Acornhoek	Rooiboklaagte A	Provision of Water	of	Access water			2,000,000		MIG	BLM
BLMW048	Construction of Branchline from main line Pipe to reservoir	Acornhoek	Rooiboklaagte B	Provision of Water	of	Access water			2,000,000		MIG	BLM
BLMW049	Construction of Concrete Reservoir	Acornhoek	Rooiboklaagte B	Provision of Water	of	Access water			1,000,000		EQ	BLM
BLMW050	Reticulation and yard meter connection	Acornhoek	Rooiboklaagte B	Provision of Water	of	Access water			8,000,000		EQ	BLM
BLMW051	Construction of bulk distribution network	Acornhoek	Ka-zitha to Timbavati and surrounding	Provision of Water	of	Access of water	13, 000, 000				EQ	BLM
BLMW052	Reticulation and yard meter connection	Acornhoek	Sigagule	Provision of Water	of	Access water			200,000		EQ	BLM
BLMW053	Reticulation and yard meter connection	Acornhoek	Technical Village	Provision of Water	of	Access water			4,000,000		EQ	BLM
BLMW054	Construction of pipeline from main line to reservoir	Acornhoek	Timbavati	Provision of Water	of	Access water			4,651,569		MIG	BLM
BLMW055	Construction of Reservoir	Acornhoek	Timbavati	Provision of Water	of	Access water			4,474,011		EQ	BLM
BLMW056	Reticulation and yard meter connection	Acornhoek	Timbavati	Provision of Water	of	Access water			9,000,000		EQ	BLM
BLMW057	Reticulation and yard meter connection	Acornhoek	Tintswalo Village	Provision of Water	of	Access water				3,000,000	EQ	BLM
BLMW058	Construction of Concrete Reservoir	Acornhoek	Tsakane (Modiambongolo)	Provision of Water	of	Access water			504,000		EQ	BLM

INTEGRATED DEVELOPMENT PLAN



Bushbuckridge Local Municipality
Integrated Development Plan: Revision 2009/2010-2010/2011-2011/2012

BLMW059	Reticulation and meter connection	Acornhoek	Tsakane (Modiambongolo)	Provision of Water	of	Access water		3,000,000		EQ	BLM
BLMW060	Reticulation and meter connection	Acornhoek	Wits	Provision of Water	of	Access water		3,000,000		EQ	BLM
BLMW061	Water reticulation	Acornhoek	Zimbabwe Greenvalley	Provision of Water		Access of water		4,000,000	3,000,000	EQ	BLM
BLMW062	Construction of Reservoir 1ML & 4ML	Agincourt	Agincourt	Provision of Water	of	Access water			5,472,000	MIG	BLM
BLMW063	Construction of bulk distribution network Agincourt and surrounding areas	Agincourt	Agincourt to Ireagh A & B and surroundings	Provision of Water		Access of water	14,000,000			MIG	BLM
BLMW064	Water reticulation	Agincourt	Agincourt	Provision of Water		Access of water	600,000			EQ	BLM
BLMW065	Construction of 500kl reservoir	Agincourt	Croquetlawn	Provision of Water	of	Access water			1,140,000	EQ	BLM
BLMW066	Construction of pipeline from main pipe to reservoir	Agincourt	Croquetlawn B	Provision of Water	of	Access water			888,040	MIG	BLM
BLMW067	Construction of reservoir	Agincourt	Cunningmoore B	Provision of Water	of	Access water		2,000,000		EQ	BLM
BLMW068	Reticulation and meter connection	Agincourt	Cunningmoore B	Provision of Water	of	Access water			3,000,000	EQ	BLM
BLMW069	Construction of pipeline from main pipe to reservoir	Agincourt	Cunningmoore B	Provision of Water	of	Access water		2,000,000		MIG	BLM

INTEGRATED DEVELOPMENT PLAN



Bushbuckridge Local Municipality
Integrated Development Plan: Revision 2009/2010-2010/2011-2011/2012

BLMW070	Construction of pipeline from main pipe to reservoir	Agincourt	Dumphries	Provision Water	of	Access water			7,000,000			MIG	BLM
BLMW071	Construction of concrete reservoir	Agincourt	Dumphries	Provision Water	of	Access water			1,000,000			EQ	BLM
BLMW072	Reticulation and yard meter connection	Agincourt	Dumphries	Provision Water	of	Access water			700,000			EQ	BLM
BLMW073	Reticulation and yard meter connection	Agincourt	Dumphries A	Provision Water	of	Access water				3,000,000		EQ	BLM
BLMW074	Reticulation and yard meter connection	Agincourt	Dumphries B	Provision Water	of	Access water				3,000,000		EQ	BLM
BLMW075	Construction of pipeline from main pipe to reservoir	Agincourt	Ireagh (Kamasuku) A	Provision Water	of	Access water				1,585,790		MIG	BLM
BLMW076	Construction of pipe from Newington to Kamasuku	Agincourt	Ireagh (Kamasuku) A	Provision Water	of	Access water				190,294		MIG	BLM
BLMW077	Construction of Reservoir	Agincourt	Ireagh (Kamasuku) A	Provision Water	of	Access water				1,596,000		EQ	BLM
BLMW078	Reticulation and yard meter connection	Agincourt	Ireagh (Kamasuku) A	Provision Water	of	Access water				2,500,000		EQ	BLM
BLMW079	Reticulation and yard meter connection	Agincourt	Ireagh (Ximhungwe RDP) B	Provision Water	of	Access water			3,000,000			EQ	BLM
BLMW080	Reticulation and yard meter connection	Agincourt	M.P. Stream(Kopeni))	Provision Water	of	Access water				3,000,000		EQ	BLM
BLMW081	Construction of Pump station	Agincourt	Newington A	Provision Water	of	Access water				322,335		EQ	BLM



INTEGRATED DEVELOPMENT PLAN

BLMW082	Construction Reservoir	Agincourt	Newington A	Provision Water	of	Access water				1,075,571	EQ	BLM
BLMW083	Reticulation and meter connection	Agincourt	Newington A	Provision Water	of	Access water	3,000,000				EQ	BLM
BLMW084	Construction of 200Ml reservoir	Agincourt	Newington B	Provision Water	of	Access water			456,000		EQ	BLM
BLMW085	Construction of pipeline from main pipe to reservoir	Agincourt	Newington B	Provision Water	of	Access water			2,920,753		MIG	BLM
BLMW086	Construction of pipe from Newington C to Newington B	Agincourt	Newington B	Provision Water	of	Access water			1,268,632		MIG	BLM
BLMW087	Construction of pipeline from main pipe to reservoir	Agincourt	Newington C	Provision Water	of	Access water			3,725,582		MIG	BLM
BLMW088	Construction of 500KI reservoir	Agincourt	Newington C	Provision Water	of	Access water			1,140,000		EQ	BLM
BLMW089	Construction of pipeline from main pipe to reservoir	Agincourt	Xanthia	Provision Water	of	Access water	2,500,000				MIG	BLM
BLMW090	Reticulation and meter connection	Agincourt	Xanthia (Sick line)	Provision Water	of	Access water			3,000,000		EQ	BLM
BLMW091	Concrete reservoir 400L	Agincourt	Cunningmoore B	Provision Water	of	Access water			912,000		EQ	BLM
BLMW092	Reticulation and meter connection	Casteel	Arthurseat	Provision Water	of	Access water	-		3,000,000		EQ	BLM
BLMW093	Reticulation and meter connection	Casteel	Bongampisi	Provision Water	of	Access water			3,000,000		EQ	BLM

INTEGRATED DEVELOPMENT PLAN



Bushbuckridge Local Municipality
Integrated Development Plan: Revision 2009/2010-2010/2011-2011/2012

BLMW094	Construction of pipeline from main pipe to reservoir	Casteel	Casteel	Provision of Water	Access water		3,000,000			MIG	BLM
BLMW095	Construction of pipeline from main pipe to reservoir	Casteel	Casteel	Provision of Water	Access water		2,000,000			MIG	BLM
BLMW096	Construction of 2 concrete reservoir	Casteel	Casteel	Provision of Water	Access water		2,000,000			EQ	BLM
BLMW097	Reticulation and yard meter connection	Casteel	Casteel	Provision of Water	Access water		900,000			EQ	BLM
BLMW098	Construction of concrete reservoir	Casteel	Craighburn (Benoni)	Provision of Water	Access water		1,000,000			EQ	BLM
BLMW099	Reticulation and yard meter connection	Casteel	Craighburn (Benoni)	Provision of Water	Access water		3,000,000			EQ	BLM
BLMW100	Construction of bulk distribution network Craighburn/Rooiboklaagte and surrounding areas	Casteel	Craighburn to Rooiboklaagte and surrounding areas	Provision of Water	Access of water	8,600,000				EQ	BLM
BLMW101	Reticulation and yard meter connection	Casteel	Dikwenkweng	Provision of Water	Access water			3,000,000		EQ	BLM
BLMW102	Construction of pipeline from main pipe to reservoir	Casteel	Ga-Joseph	Provision of Water	Access water		5,000,000			MIG	BLM
BLMW103	Construction of reservoir in various areas	Casteel Dwarsloop Mavijian	Ga-Joseph Boikhutso Dwarsloop trust Motibidi Saselani Mphenyatsatsi	Provision of Water	Access of Potable water		8,500,000			EQ	BLM
BLMW104	Reticulation and yard meter connection	Casteel	Ga-Joseph	Provision of Water	Access water			3,000,000		EQ	BLM

INTEGRATED DEVELOPMENT PLAN



Bushbuckridge Local Municipality
Integrated Development Plan: Revision 2009/2010-2010/2011-2011/2012

BLMW105	Water reticulation	Casteel	Zoeknog (Sofaya)	Provision of Water	Access of water	1, 800, 000					BLM
BLMW106	Construction of pipeline from main pipe to reservoir	Casteel	Mkhululine	Provision of Water	Access of water		2,000,000	3,000,000			BLM
BLMW107	Construction of concrete Reservoir	Casteel	Mkhululine	Provision of Water	Access of water		1,000,000				BLM
BLMW108	Reticulation and yard meter connection	Casteel	Mkhululine	Provision of Water	Access of water		4,000,000				BLM
BLMW109	Reticulation and yard meter connection	Casteel	Mospa	Provision of Water	Access of water			2,500,000			BLM
BLMW110	Construction of Pump stations	Casteel	Motlamogale	Provision of Water	Access of water		8,000,000				BLM
BLMW111	Branch line from Motlamogale to Wales	Casteel	Motlamogale	Provision of Water	Access of water	1,000,000					BLM
BLMW112	Construction of concrete Reservoir	Casteel	Motlamogale	Provision of Water	Access of water		1,000,000				BLM
BLMW113	Construction of Pump stations	Casteel	New Line	Provision of Water	Access of water		800,000				BLM
BLMW114	Construction of pipeline from main pipe to reservoir	Casteel	New Line	Provision of Water	Access of water		3,000,000				BLM
BLMW115	Construction of concrete Reservoir	Casteel	New Line	Provision of Water	Access of water		1,000,000				BLM
BLMW116	Construction of Pump stations	Casteel	Thembisa	Provision of Water	Access of water		2,000,000				BLM

INTEGRATED DEVELOPMENT PLAN



Bushbuckridge Local Municipality
Integrated Development Plan: Revision 2009/2010-2010/2011-2011/2012

BLMW117	Construction of pipeline from main pipe to reservoir	Casteel	Wales A	Provision Water	of	Access water		4,000,000			MIG	BLM
BLMW118	Construction of concrete Reservoir	Casteel	Wales A	Provision Water	of	Access water		1,000,000			EQ	BLM
BLMW119	Construction of concrete Reservoir	Casteel	Wales A	Provision Water	of	Access water		1,000,000			EQ	BLM
BLMW120	Reticulation and yard meter connection	Casteel	Wales A	Provision Water	of	Access water			2,000,000		EQ	BLM
BLMW121	Construction of pipeline from main pipe to reservoir	Casteel	Wales B	Provision Water	of	Access water		3,000,000			EQ	BLM
BLMW122	Construction of Reservoir	Casteel	Wales B	Provision Water	of	Access water		3,000,000			EQ	BLM
BLMW123	Water reticulation phase 1	Casteel	Zoeknog (Ga Pharea)	Provision Water	of	Access water	1,800,000				EQ	BLM
BLMW124	Construction of pipeline from main pipe to reservoir	Dwarsloop	Arthurstone (Buyisonto)	Provision Water	of	Access water		5,377,851			MIG	BLM
BLMW125	Water reticulation	Dwarsloop	Arthurstone	Provision of Water		Access of water	2, 500, 000				EQ	BLM
BLMW126	Construction of 2Ml Reservoir and pipeline	Dwarsloop	Arthurstone	Provision of Water		Access of water	5, 000, 000				MIG	BLM
BLMW127	Refurbishment of bulk pipe	Dwarsloop	Arthurstone (Buyisonto)	Provision Water	of	Access water		5,000,000			MIG	BLM
BLMW128	Construction of concrete Reservoir	Dwarsloop	Boikhutso	Provision Water	of	Access water		507,473			EQ	BLM

INTEGRATED DEVELOPMENT PLAN



Bushbuckridge Local Municipality
Integrated Development Plan: Revision 2009/2010-2010/2011-2011/2012

BLMW129	Refurbishment of Dwarloop bulk pipeline	Dwarloop	Dwarloop town	Provision of Water	Access of water	2, 000, 000					BLM
BLMW130	Construction of Secondary bulk	Dwarloop	Dwarloop town	Provision of Water	Access of water	12, 000, 000					BLM
BLMW131	Construction of concrete Reservoir	Dwarloop	Dwarloop Trust (Matsilapata)	Provision of Water	Access of water		1,368,000				BLM
BLMW132	Construction of 1.5ML Reservoir	Dwarloop	Saselani	Provision of Water	Access of water			3,629,714			BLM
BLMW133	Water reticulation	Dwarloop & Shatale	Motibidi Relani	Provision of Water	Access of water	3, 600, 000					BLM
BLMW134	Construction of Reservoir	Hluvukani	Athol	Provision of Water	Access of water			570,274			BLM
BLMW135	Reticulation and yard meter connection	Hluvukani	Athol	Provision of Water	Access of water				3,000,000		BLM
BLMW136	Construction of Reservoir	Hluvukani	Clare A (New Settlement)	Provision of Water	Access of water			456,000			BLM
BLMW137	Installation of Elevated tank	Hluvukani	Clare A (New Settlement)	Provision of Water	Access of water			456,000			BLM
BLMW138	Refurbishment Bulk pipe	Hluvukani	Clare A (New Settlement)	Provision of Water	Access of water			3,000,000			BLM
BLMW139	Construction of concrete Reservoir	Hluvukani	Clare B	Provision of Water	Access of water			456,000			BLM
BLMW140	Reticulation	Hluvukani	Clare	Provision of Water	Access of water	500, 000					BLM



INTEGRATED DEVELOPMENT PLAN

BLMW141	Refurbishment of bulk pipe	Hluvukani	Eglington (Share)	B	Provision of Water	of Access water			2,000,000			MIG	BLM
BLMW142	Construction of 100KL reservoir	Hluvukani	Eglington		Provision of Water	of Access water				289,080		EQ	BLM
BLMW143	Construction of Reservoir	Hluvukani	Hluvukani		Provision of Water	of Access water				3,876,000		EQ	BLM
BLMW144	Construction of bulk distribution network Hluvukani and surrounding areas	Hluvukani	Ludlow to Hluvukani and surrounding areas		Provision of Water	of Access water	18,600,000					MIG	BLM
BLMW145	Reticulation and yard meter connection	Hluvukani	Hluvukani PHP		Provision of Water	of Access water			5,000,000			EQ	BLM
BLMW146	Construction of bulk distribution network Isington and surrounding areas	Hluvukani	Weverdiend to Manyeleti and surrounding areas		Provision of Water	of Access water	15,000,000					MIG	BLM
BLMW147	Construction of Concrete Reservoir	Hluvukani	Ludlow		Provision of Water	of Access water			3,192,000			EQ	BLM
BLMW148	Construction of pipeline from Hlalakahle to Manyeleti camp	Hluvukani	Hlalakahle		Provision of Water	of Access water				3,265,236		MIG	BLM
BLMW149	Construction of 200kl reservoir	Hluvukani	Manyeleti camp		Provision of Water	of Access water				456,000		EQ	BLM
BLMW150	Construction of pipeline from main pipe to reservoir	Hluvukani	Ludlow		Provision of Water	of Access water			3,000,000			MIG	BLM



INTEGRATED DEVELOPMENT PLAN

BLMW151	Construction of pipeline from main pipe to reservoir	Hluvakani	Thorndale	Provision Water	of	Access water				2,917,850	MIG	BLM
BLMW152	Reticulation and yard meter connection	Hluvakani	Thorndale	Provision Water	of	Access water				3,000,000	EQ	BLM
BLMW153	Construction of bulk line from Inyaka bulk to Hlabekisa	Hluvakani	Tlhavekisa	Provision Water	of	Access water				3,030,490	MIG	BLM
BLMW154	Reticulation and yard meter connection	Hluvakani	Utah A & B	Provision Water	of	Access water				2,500,000	EQ	BLM
BLMW155	Construction of pipeline from Hluvakani pump station to Welverdiend	Hluvakani	Wolverdiend	Provision Water	of	Access water			5,283,760		MIG	BLM
BLMW156	Construction of Reservoir	Hluvakani	Wolverdiend	Provision Water	of	Access water			1,824,000		EQ	BLM
BLMW157	Installation of Bulk pipe from the Dam to the Purification plant	Inyaka	BBR Community	Provision Water	of	Access water				4,000,000	MIG	BLM
BLMW158	Construction of pipeline from Ndonga Branch-line via Cuningmoore to Huntington	Lilydale	Kildare Cork Cork- Ka Dube(Branch off) Mkhulu Cunningmoore Lilydale	Provision of Water	of	Access of water		18,000,000			MIG	BLM
BLMW159	Construction of bulk pipe to sommerset	Lilydale	Belfast	Provision Water	of	Access water			3,271,408		MIG	BLM
BLMW160	Construction of pipeline from main pipe to reservoir	Lilydale	Huntington	Provision Water	of	Access water				634,316	MIG	BLM

INTEGRATED DEVELOPMENT PLAN



Bushbuckridge Local Municipality
Integrated Development Plan: Revision 2009/2010-2010/2011-2011/2012

BLMW161	Installation of booster pump	Lilydale	Huntington	Provision of Water	Access water			8,00,000			EQ	BLM
BLMW162	Construction of reservoir	Lilydale	Huntington	Provision of Water	Access water			1,140,000			EQ	BLM
BLMW163	Construction of pipe from Mabarhule to Huntington	Lilydale	Huntington	Provision of Water	Access water			1,014,905			MIG	BLM
BLMW164	Construction of pipeline from Lillydale to Justicia	Lilydale	Justicia	Provision of Water	Access water			5,603,921			MIG	BLM
BLMW165	Construction of pipeline from Lillydale to Justicia	Lilydale	Justicia	Provision of Water	Access water			2,617,126			MIG	BLM
BLMW166	Booster pump to Steel Elevated tank	Lilydale	Kildare	Provision of Water	Access water			3,000,000			EQ	BLM
BLMW167	Construction of bulk distribution network Justicia and surrounding areas	Lilydale	Justicia B Beifast Mabarhule Lilydale Huntington Rhulani Somerset	Provision of Water	Access of water		27,000,000				MIG	BLM
BLMW168	Construction of reservoir	Lilydale	Justicia B	Provision of Water	Access water			1,596,000			EQ	BLM
BLMW169	Construction of pipeline from main pipe to reservoir	Lilydale	Kildare (Kamalamule)	Provision of Water	Access water			4,600,000			MIG	BLM
BLMW170	Construction of Pipe from Kildare pump station to Lillydale Reservoir	Lilydale	Kildare (Kamalamule)	Provision of Water	Access water			3,000,000			MIG	BLM
BLMW171	Reticulation and yard meter connection	Lilydale	Kildare (Kamalamule)	Provision of Water	Access water			3,000,000			EQ	BLM
BLMW172	Construction of Pipe from Cork Junction to Kildare	Lilydale	Kildare (Kamalamule)	Provision of Water	Access water			4,886,804			MIG	BLM

INTEGRATED DEVELOPMENT PLAN



Bushbuckridge Local Municipality
Integrated Development Plan: Revision 2009/2010-2010/2011-2011/2012

BLMW173	Refurbishment of Pump station	Lilydale	Kildare (Kamalamule)	A	Provision of Water	Access water				288,990	EQ	BLM
BLMW174	Construction of reservoirs Lilydale	Lilydale	Lilydale		Provision of Water	Access of water		2,000,000		2,280,000	MIG	BLM
BLMW175	Construction of bulk Pipe from Metsi Branchline Lilydale	Lilydale	Lilydale A		Provision of Water	Access water		1,423,369			MIG	BLM
BLMW176	Construction of bulk Pipe from Justicia to Rhulani	Lilydale	Lilydale (Rhulani)	A	Provision of Water	Access water		1,947,169			MIG	BLM
BLMW177	Construction of pipe from Lilydale B to Rhulani	Lilydale	Lilydale (Mabarhule)	B	Provision of Water	Access water		1,861,094			MIG	BLM
BLMW178	Construction of Reservoir in Rhulani 400kl	Lilydale	Rhulani		Provision of Water	Access water		1,368,000			EQ	BLM
BLMW179	Construction of bulk Pipe from Kamalamule main line to Ireagh B	Lilydale	Metsi (Ireagh B)		Provision of Water	Access water		6,650,680			MIG	BLM
BLMW180	Construction of Reservoir	Lilydale	Metsi (Ireagh B)		Provision of Water	Access water			600,000		EQ	BLM
BLMW181	Construction of bulk Pipe from Rhulani main line to Somerset	Lilydale	Somerset		Provision of Water	Access water		2,208,200			MIG	BLM
BLMW182	Construction of branch pipe to reservoir	Lilydale	Somerset		Provision of Water	Access water		81,785			MIG	BLM
BLMW183	Reticulation and yard meter connection	Lilydale	Somerset		Provision of Water	Access water				3,000,000	EQ	BLM
BLMW184	Construction of reservoir in various areas	Lilydale	Kildare A Metsi Lilydale (new)		Provision of water	Access of water		19,000,000			MIG	BLM
BLMW185	Construction of Bulk from Marite to	Mariti	Alexandria		Provision of Water	Access water		6,088,538			MIG	BLM

INTEGRATED DEVELOPMENT PLAN



Bushbuckridge Local Municipality
Integrated Development Plan: Revision 2009/2010-2010/2011-2011/2012

BLMW186	Alexandria water reticulation	Mariti	Sanford	Provision Water	Access water				3,000,000		MIG	BLM
BLMW187	Construction of Bulk pipe from main line to reservoir	Mariti	Sanford	Provision Water	Access water				8,000,000		MIG	BLM
BLMW188	Installation of Booster pump	Mariti	Jim Brown	Provision Water	Access water						MIG	BLM
BLMW189	Water reticulation	Mariti	Screpeng Madyana	Provision of Water	Access of water			1,600,000			MIG	BLM
BLMW189	Construction of concrete Reservoir	Mariti	Sanford	Provision Water	Access water				1,000,000		EQ	BLM
BLMW190	Construction of reservoir	Mariti	Madras B	Provision Water	Access water					684,000	EQ	BLM
BLMW191	Construction of Reservoir 200KI	Mariti	Madras A	Provision Water	Access water					456,000	EQ	BLM
BLMW192	Installation of Booster pump	Mariti	Madras Central	Provision Water	Access water					346,788	EQ	BLM
BLMW193	Construction of reservoir	Mariti	Madras Central	Provision Water	Access water				3,361,745		EQ	BLM
BLMW194	Construction Reservoir	Mariti	Mathibela	Provision Water	Access water						EQ	BLM
BLMW195	Construction of Reservoir	Mariti	Mazakhele	Provision Water	Access water				2,000,000		EQ	BLM
BLMW196	Construction of concrete Reservoir	Mariti	Screpeng	Provision Water	Access water				2,000,000		EQ	BLM
BLMW197	Construction of Reservoir	Mariti	Shatleng	Provision Water	Access water				1,000,000		EQ	BLM
BLMW198	Water reticulation	Mariti	Waterval Carlton	Provision of Water	Access of water			3,500,000	2,000,000		EQ	BLM

INTEGRATED DEVELOPMENT PLAN



Bushbuckridge Local Municipality
Integrated Development Plan: Revision 2009/2010-2010/2011-2011/2012

Project ID	Description	Mariti	Mariti (Waternal)	Provision of Water	Access of water	6, 500, 000	Cost	Category	BLM
BLMW199	Construction of bulk distribution network Mariti and surrounding areas Phase 2	Mariti		Provision of Water	Access of water			MIG	BLM
BLMW200	Water reticulation	Mavilijan	Mandela (Matengfeng)	Provision of Water	Access of water	4, 000, 000		EQ	BLM
BLMW201	Reticulation and yard meter connection	Mavilijan	Masana	Provision of Water	Access of water	3, 000, 000		EQ	BLM
BLMW202	Reticulation and yard meter connection	Mavilijan	Matengfeng	Provision of Water	Access of water		3, 000, 000	EQ	BLM
BLMW203	Installation of booster pump	Mavilijan	Mphenyatsatsi	Provision of Water	Access of water	432,630		EQ	BLM
BLMW204	Bulk line from Masana Reservoir to Mphenyatsatsi	Mavilijan	Mphenyatsatsi	Provision of Water	Access of water	4, 000, 000		MIG	BLM
BLMW205	Construction of concrete Reservoir	Mkhuflu	Cork	Provision of Water	Access of water		2, 964, 000	EQ	BLM
BLMW206	Construction of bulk Pipe from reservoir to Cork Junction	Mkhuflu	Cork	Provision of Water	Access of water		2, 453, 556	MIG	BLM
BLMW207	Construction from Kildare pump station reservoir to Cork junction	Mkhuflu	Cork	Provision of Water	Access of water	12, 765, 930		MIG	BLM
BLMW208	Reticulation and yard meter connection	Mkhuflu	Calcutta A,B,C	Provision of Water	Access of water		4, 000, 000	EQ	BLM
BLMW209	Installation of Pump station	Mkhuflu	Cunningmoore A	Provision of Water	Access of water		800, 000	EQ	BLM
BLMW210	Construction of concrete Reservoir	Mkhuflu	Cunningmoore A	Provision of Water	Access of water		2, 280, 000	EQ	BLM



INTEGRATED DEVELOPMENT PLAN

BLMW211	Construction of Bulk pipe from Hoxani to booster pump	Mkhuhlu	Goromani (Madras B)	Provision of Water	of	Access water			1,906,745	MIG	BLM
BLMW212	Construction of pipeline from Hoxani to madras	Mkhuhlu	Madras C	Provision of Water	of	Access water			545,512	MIG	BLM
BLMW213	Water reticulation	Mkhuhlu	Goromani	Provision of Water		Access of water	1,500,000			EQ/MIG	BLM
BLMW214	Construction of Reservoir	Mkhuhlu	Goromani	Provision of Water	of	Access water			285,000	EQ	BLM
BLMW215	Hoxani Treatment works Module 5	Mkhuhlu	Hoxani Mkhuhlu	Provision of Water		Access of water	20,000,000		255,645	EQ	Mbombela & DWAF
BLMW216	Refurbishment of Pump station	Mkhuhlu	Mashonameni	Provision of Water	of	Access water			306,774	EQ	BLM
BLMW217	Construction of pipeline to pump station	Mkhuhlu	Mashonameni	Provision of Water	of	Access water			1,043,450	MIG	BLM
BLMW218	Construction of bulk pipeline from main line to Reservoir	Mkhuhlu	Mashonameni	Provision of Water	of	Access water			587,919	MIG	BLM
BLMW219	Construction of bulk pipeline from main line to Reservoir	Mkhuhlu	Ronaldsey	Provision of Water	of	Access water			380,945	MIG	BLM
BLMW220	Construction of concrete Reservoir	Mkhuhlu	Ronaldsey	Provision of Water	of	Access water			228,000	EQ	BLM
BLMW221	Construction of concrete Reservoir	Mkhuhlu	Soweto	Provision of Water	of	Access water	1,400,000			EQ	BLM
BLMW222	Construction of bulk distribution network Mariti North and surrounding areas	Mkhuhlu	Soweto Mariti north Marongwane Oakley Cuningmoore A Tsakane	Provision of Water		Access of water	15,000,000			MIG	BLM
BLMW223	Reticulation and yard meter connection	Mkhuhlu	Teka Mahala	Provision of Water	of	Access water			2,000,000	EQ	BLM

INTEGRATED DEVELOPMENT PLAN



Bushbuckridge Local Municipality
Integrated Development Plan: Revision 2009/2010-2010/2011-2011/2012

BLMW224	Construction of concrete Reservoir	Mkhuhlu	Thusanang	Provision of Water	of	Access water			1,000,000				BLM
BLMW225	Transfer line from Inyaka treatment plant to Shatale branch	Shatale	Shatale London	Provision of Water	of	Access of water	34, 000, 000		19,179,964	10,000,000		MIG	BLM
BLMW226	Reticulation and yard meter connection	Shatale	Hlangwane (Rainbow)	Provision of Water	of	Access water				3,000,000		EQ	BLM
BLMW227	Reticulation and yard meter connection	Shatale	Madjembeni	Provision of Water	of	Access water				3,000,000		EQ	BLM
BLMW228	Installation of Elevated tank	Shatale	Madjembeni (Dimonganeng)	Provision of Water	of	Access water			3,876,000			EQ	BLM
BLMW229	Reticulation and yard meter connection	Shatale	Mandela (Koffi)	Provision of Water	of	Access water				2,000,000		EQ	BLM
BLMW230	Water reticulation	Shatale	Mandela Village (Shatale)	Provision of Water	of	Access of water			2, 000, 000			EQ	BLM
BLMW231	Construction of bulk pipe to Elevated tank	Shatale	Masakeng	Provision of Water	of	Access water			255,645			MIG	BLM
BLMW232	Water reticulation	Shatale	Rivoni ext	Provision of Water	of	Access of water			2, 000, 000			EQ	BLM
BLMW233	Construction of concrete Reservoir	Shatale	Rivoni	Provision of Water	of	Access water			1,000,000			EQ	BLM
BLMW234	Reticulation and yard meter connection	Shatale	Shatale RDP	Provision of Water	of	Access water			2,000,000			EQ	BLM
BLMW235	Construction of Pump stations	Shatale	Shatale Township	Provision of Water	of	Access water				1,000,000		EQ	BLM
BLMW236	Construction of concrete Reservoir	Shatale	Shatale Township	Provision of Water	of	Access water			1,000,000			EQ	BLM
BLMW237	Construction of bulk pipe from Relani pipe to Shatale reservoir	Shatale	Shatale Township	Provision of Water	of	Access water			5,000,000			MIG	BLM



Bushbuckridge Local Municipality
Integrated Development Plan: Revision 2009/2010-2010/2011-2011/2012

INTEGRATED DEVELOPMENT PLAN

BLMW238	Upgrading Purification plant	Shatale	Shatale Township	Provision of Water	Access of water	700,000						BLM
	Construction of Bulk Network distribution, Shatale and surrounding areas	Shatale	Shatale Relani Violetbank A London	Provision of Water	Access of water	6,000,000						BLM
BLMW239	Shatale and Thabakgolo Water reticulation	Shatale	Shatale Thabakgolo Masakeng	Provision of Water	Access of water	3,000,000	3,000,000					BLM
BLMW240	Construction of bulk line to reservoir	Shatale	Voilet Bank A	Provision of Water	Access of water		3,000,000					BLM
BLMW241	Construction of Elevated tank	Shatale	Voilet Bank A	Provision of Water	Access of water	1,000,000						BLM
BLMW242	Shatale/ ChrisHani and Orinocco water reticulation phase 2	Shatale	Orinocco & Chris Hani	Provision of Water	Access of water	8000000						BLM
BLMW243	Chris Hani/ Bulk supply	Shatale	Orinocco & Chris Hani	Provision of Water	Access of water		10,000,000					BLM
BLMW244	Construction of Reservoir	Shatale	Zoeknog - Sofaya B	Provision of Water	Access of water	1,800,000						BLM
BLMW245	Construction of Bulk distribution network. (Dingleydale and surrounding areas)	Thulamahashe	Dingleydale Chochocho Athol Islington Edinburgh Thulamahashe Tshunelani	Provision of Water	Access of water	17,000,000						BLM
BLMW246	Construction of bulk water pipe line to Edinburg dam	Thulamahashe	Edinburgh	Provision of Water	Access of water	2,500,000						BLM
BLMW247	Construction of Reservoir	Thulamahashe	Allandale A & B	Provision of Water	Access of water	456,000						BLM



INTEGRATED DEVELOPMENT PLAN

BLMW249	Reticulation and yard meter connection	Thulamahashe	Allandale B	Provision Water	of	Access water												BLM
BLMW250	Reticulation and yard meter connection	Thulamahashe	Borheni	Provision Water	of	Access water												BLM
BLMW251	Reticulation and yard meter connection	Thulamahashe	Dark city	Provision Water	of	Access water												BLM
BLMW252	Water Reticulation	Thulamahashe	Dingleydale B	Provision Water	of	Access water						1, 500, 000						BLM
BLMW253	Installation of booster pump	Thulamahashe	Dingleydale A (Chochocho)	Provision Water	of	Access water							800,000					BLM
BLMW254	Construction of Bulk pipe from Inyaka to Edinburgh	Thulamahashe	Edinburg Village	Provision Water	of	Access water								2,537,264				BLM
BLMW255	Construction of Reservoir	Thulamahashe	Edinburgh A & C	Provision Water	of	Access water								2,000,000				BLM
BLMW256	Construction of Pump station	Thulamahashe	Edinburgh B	Provision Water	of	Access water								2,000,000				BLM
BLMW257	Reticulation and yard meter connection	Thulamahashe	Hokwe	Provision Water	of	Access water												BLM
BLMW258	Water reticulation	Thulamahashe	Kumana MP Stream Dumphries A,B & C Hokwe	Provision of Water	of	Access of water									10, 000, 000			BLM
BLMW259	Reticulation and yard meter connection	Thulamahashe	M.P Stream	Provision Water	of	Access water												BLM
BLMW260	Installation of booster pump	Thulamahashe	Kumani	Provision Water	of	Access water												BLM

INTEGRATED DEVELOPMENT PLAN



Bushbuckridge Local Municipality
Integrated Development Plan: Revision 2009/2010-2010/2011-2011/2012

BLMW261	Construction of bulk line from main line to reservoir	Thulamahashe	New Forest (Tshunelani)	B	Provision of Water	of	Access water						2,044,630		MIG		BLM
BLMW262	Installation of Elevated tank	Thulamahashe	New Forest A		Provision of Water	of	Access water						504,473		EQ		BLM
BLMW263	Reticulation and yard meter connection	Thulamahashe	New Forest A		Provision of Water	of	Access water			3,000,000					EQ		BLM
BLMW264	Water reticulation	Thulamahashe	Ludlow		Provision of Water	of	Access water		2,500,000						EQ		BLM
BLMW265	Construction of bulk line from main line to reservoir	Thulamahashe	Orinoco		Provision of Water	of	Access water						408,920		EQ		DWAF
BLMW266	Construction of Concrete Reservoir 900kl	Thulamahashe	Orinoco A East (Demulani)		Provision of Water	of	Access water			2,079,240					EQ		BLM
BLMW267	Construction of Concrete Reservoir 300kl	Thulamahashe	Orinoco A West (Demulani)		Provision of Water	of	Access water			748,188					EQ		BLM
BLMW268	Construction of Reservoir	Thulamahashe	Thulamahashe town		Provision of Water	of	Access water						3,648,000		EQ		BLM
BLMW269	Construction of bulk distribution network Thulamahashe and surrounding areas	Thulamahashe	Thulamahashe Isilington Rolle Tshunelani Zola		Provision of Water	of	Access water		14,000,000						MIG		BLM
BLMW270	Water reticulation	Thulamahashe	Dingleydale		Provision of Water	of	Access water				1,800,000				EQ		BLM
BLMW271	Construction of bulk line from main line to reservoir	Thulamahashe	Tshunelani		Provision of Water	of	Access water				653,047		546,650		MIG		BLM
BLMW272	Construction of concrete Reservoir	Thulamahashe	Tshunelani		Provision of Water	of	Access water				255,645				EQ		BLM



INTEGRATED DEVELOPMENT PLAN

BLMW273	Water reticulation	Thulamahashe	Zola Songeni	Provision of Water	Access of water		4, 000, 000		EQ	BLM
BLMW274	Re-construction of Acornhoek bulk line	Acornhoek	Acornhoek	Provision of Water	Access of water	35, 000, 000			National treasury	DWAF
BLMW275	Refurbishment of water schemes	BBR	All regions	Provision of Water	Access of water	5, 000, 000			National treasury	DWAF

BUSHBUCKRIDGE LOCAL MUNICIPALITY

Sanitation Projects

Project ID	Project Name and number of units	Project Location	Project Beneficiaries	Project Objectives	Key Performance Indicator	Period Budget 2009/2010	Budget 2010/2011	Budget 2011/2012	Source of Funding	Implementing Agency
BLMS001	Construction of Sewerage plant and reticulation (WWTW)	Acornhoek	Acornhoek	provision of Sanitation infrastructure	Access to proper sanitation	20, 000, 000			EQ	BLM
BLMS002	Construction of sewer reticulation	Acornhoek	Acornhoek	provision of Sanitation infrastructure	Access to proper sanitation	1, 206, 000			EQ	BLM
BLMS003	Rural sanitation for all regions	BBR Community	All regions	provision of Sanitation infrastructure	Access to proper sanitation	20, 000, 000			EQ	BLM
BLMS004	Upgrading of Sewerage Plant (WWTW)	Dwarsloop	Dwarsloop	provision of Sanitation infrastructure	Access to proper sanitation		10, 000, 000		EQ	BLM
BLMS005	Sewerage reticulation	Dwarsloop	Dwarsloop	provision of Sanitation infrastructure	Access to proper sanitation		5, 000, 000		EQ	BLM
BLMS006	Upgrading of Sewerage Treatment works	Maviljan	Maviljan	provision of Sanitation infrastructure	Access to proper sanitation	20, 000, 000			EQ/MIG	BLM
BLMS007	Construction of Sewerage reticulation	Shatale	Shatale(RDP)	provision of Sanitation infrastructure	Access to proper sanitation		5, 000, 000		EQ	BLM



INTEGRATED DEVELOPMENT PLAN

BLMS008	Refurbishment of sewerage system	Thulamahashe	Thulamahashe	provision of Sanitation infrastructure	Access to proper sanitation		8, 000, 000		EQ	BLM
BLMS009	Construction of sewerage plant and sewerage pipes	Thulamahashe	Thulamahashe town	provision of Sanitation infrastructure	Water Sewerage		8,000,000		National Treasury	DPLGH
BLMS010	Refurbishment of sewerage schemes	BBR	All regions	provision of Sanitation infrastructure	Access to proper sanitation	20, 000, 000			National Treasury	DWAF

BUSHBUCKRIDGE LOCAL MUNICIPALITY

Roads, Bridges and Storm water Drainage Projects

Projects ID	Project Name	Region	R 293 Towns / Villages	Project Objectives	Key Performance Indicator	Period/ Budget 2009/2010	Budget 2010/2011	Budget 2012/2012	Source of Funding	Implementing Agency
BLMR001	Tarring of road from Bridge-way to Sigagule	Acornhoek	Sigagule	Provision of Roads, bridges and Storm water Infrastructure	Eradicate backlog of roads, Bridges and Storm water drainage.	5, 500, 000			EQ	BLM(Tech)
BLMR002	Rehabilitation and maintenance of access road, Bridgeway to Tinswalo village	Acornhoek	Acornhoek	Provision of Roads, bridges and Storm water Infrastructure	Eradicate backlog of roads, Bridges and Storm water drainage.		1,800,000		EQ	BLM(Tech)
BLMR003	Tarring of road from Plaza to Cross road	Acornhoek	Acornhoek	Provision of Roads, bridges and Storm water Infrastructure	Eradicate backlog of roads, Bridges and Storm water drainage.		3,000,000		EQ	BLM(Tech)
BLMR004	Construction of Overhead bridge over Railway line	Acornhoek	Acornhoek	Provision of Roads, bridges and Storm water Infrastructure	Eradicate backlog of roads, Bridges and Storm water drainage.		2,000,000		EQ	BLM(Tech)
BLMR005	Tarring of road From Nkomo to Andover	Acornhoek	Acornhoek	Provision of Roads, bridges and Storm water Infrastructure	Eradicate backlog of roads, Bridges		7,000,000		EQ	BLM(Tech)



Bushbuckridge Local Municipality
Integrated Development Plan: Revision 2009/2010-2010/2011-2011/2012

INTEGRATED DEVELOPMENT PLAN

BLMR006	BLMR007	BLMR008	BLMR009	BLMR010	BLMR011	BLMR012	BLMR013	BLMR014
Tarring of road ,Brooklyn T-junction to Salique	Tarring of road Cottondale to Sigagule	Tarring of road from Greenvalley to Salique Phase 2	Construction of bridge	Bridge, Rooiboklaagte "A" To Rooiboklaagte "B"	Tarring of road from Rolle/Oakley via Ximhungwe	Construction of bridge from Manyakatane to Machaye	Tarring of road from Arthurseat via Mkhululine to Greenvalley	Construction of bridge from Ben Matthushe high to Thembisa
Acornhoek	Acornhoek	Acornhoek	Acornhoek	Acornhoek	Agincourt	Agincourt	Casteel	Casteel
Brooklyn	Cottondale	Greenvalley (Khiyelang)	Powerline	Rooiboklaagte	M.P Stream Ximhungwe Agincourt Croquetlawn	Manyakatane	Arthurseat Mkhululine to Greenvalley	Ben Matthushe High school
Provision of Roads, bridges and Storm water Infrastructure	Provision of Roads, bridges and Storm water Infrastructure	Provision of Roads, bridges and Storm water Infrastructure	Provision of Roads, bridges and Storm water Infrastructure	Provision of Roads, bridges and Storm water Infrastructure	Provision of Roads, bridges and Storm water Infrastructure	Provision of Roads, bridges and Storm water Infrastructure	Provision of Roads, bridges and Storm water Infrastructure	Provision of Roads, bridges and Storm water Infrastructure
Eradicate backlog of roads, Bridges and Storm water drainage.	Eradicate backlog of roads, Bridges and Storm water drainage.	Eradicate backlog of roads, Bridges and Storm water drainage.	Eradicate backlog of roads, Bridges and Storm water drainage.	Eradicate backlog of roads, Bridges and Storm water drainage.	Eradicate backlog of roads, Bridges and Storm water drainage.	Eradicate backlog of roads, Bridges and Storm water drainage.	Eradicate backlog of roads, Bridges and Storm water drainage.	Eradicate backlog of roads, Bridges and Storm water drainage.
6,000,000	10,000,000	8,000,000	10,000,000	10,000,000	3,000,000	40,000,000	20,000,000	1,000,000
EQ	National Treasury	MIG	EQ	EQ	EQ	EQ	EQ	EQ
BLM(Tech)	Road & Trans Dept	EDM	BLM(Tech)	BLM(Tech)	BLM(Tech)	BLM(Tech)	BLM	BLM(Tech)



Bushbuckridge Local Municipality
Integrated Development Plan: Revision 2009/2010-2010/2011-2011/2012

INTEGRATED DEVELOPMENT PLAN

BLMR015	Tarring of road, Casteel, Zoeknag & Sofaya	Casteel	Casteel	Casteel	Provision of Roads, bridges and Storm water Infrastructure	Eradicate backlog of roads, Bridges and Storm water drainage.	17,000,000	17,000,000		National Treasury									Dept of Road & Transport
BLMR016	Construction of Foot Bridge	Casteel	Casteel		Provision of Roads, bridges and Storm water Infrastructure	Eradicate backlog of roads, Bridges and Storm water drainage.	400,000			EQ									BLM(Tech)
BLMR017	Tarring of road from Arthurseat via Dingleydale to Thulamahashe	Casteel	Arthurseat	Arthurseat	Provision of Roads, bridges and Storm water Infrastructure	Eradicate backlog of roads, Bridges and Storm water drainage.	5,000,000	5,000,000		EQ									BLM(Tech)
BLMR018	Tarring of road, Casteel To Dingleydale	Casteel	Casteel LCH	Casteel LCH	Provision of Roads, bridges and Storm water Infrastructure	Eradicate backlog of roads, Bridges and Storm water drainage.	12,000,000	12,000,000	15,000,000	EQ									EDM
BLMR019	Tarring of road from Ga-Mthakathi to Wales Phase 2	Casteel	Ga-Mthakathi Wales	Ga-Mthakathi Wales	Provision of Roads, bridges and Storm water Infrastructure	Eradicate backlog of roads, Bridges and Storm water drainage.	6,000,000	6,000,000		National Treasury									Dept of Roads and Transport
BLMR020	Tarring of internal streets	Dwarsloop	Dwarsloop	Dwarsloop	Provision of Roads, bridges and Storm water Infrastructure	Eradicate backlog of roads, Bridges and Storm water drainage.	3,000,000	3,000,000		EQ									BLM(Tech)
BLMR021	Tarring of road Motibidi to Masakeng (14km)	Dwarsloop	Dwarsloop	Dwarsloop	Provision of Roads, bridges and Storm water Infrastructure	Eradicate backlog of roads, Bridges and Storm water drainage.	20,000,000.0	20,000,000	25,000,000	EQ									BLM(Tech)
BLMR022	Tarring of Road from Boikhutso to MP Stream	Dwarsloop	Boikhutso MP Stream	Boikhutso MP Stream	Provision of Roads, bridges and Storm water Infrastructure	Eradicate backlog of roads, Bridges and Storm water drainage.	10,000,000	10,000,000		EQ									BLM



INTEGRATED DEVELOPMENT PLAN

BLMR023	Construction of bridge from Ka-jeke to Freddy sithole	Dwarsloop	Ka-jeke	Provision of Roads, bridges and Storm water Infrastructure	Eradicate backlog of roads, Bridges and Storm water drainage.	1, 000, 000			EQ	BLM
BLMR024	Construction of Bridge, Clare "A" To Hluvukani	Hluvukani	Clare A (New Settlement)	Provision of Roads, bridges and Storm water Infrastructure	Eradicate backlog of roads, Bridges and Storm water drainage.	3,500,000			EQ	BLM
BLMR025	Opening of entrance street from main road to Delano (Ka-Shortly)	Hluvukani	Delane (Ka-Shortly)	Provision of Roads, bridges and Storm water Infrastructure	Eradicate backlog of roads, Bridges and Storm water drainage.	500, 000			EQ	BLM
BLMR026	Tar Entrance road To Share Village Through Hluvukani	Hluvukani	Eglington B (Share)	Provision of Roads, bridges and Storm water Infrastructure	Eradicate backlog of roads, Bridges and Storm water drainage.	2,000,000			EQ	BLM
BLMR027	Tarring of road from Hluvukani via Athol to Garagate	Hluvukani	Athol	Provision of Roads, bridges and Storm water Infrastructure	Eradicate backlog of roads, Bridges and Storm water drainage.	25,000,000	25,000,000		EQ	BLM
BLMR028	Tarring of road from Ludlow to Share	Hluvukani	Ludlow	Provision of Roads, bridges and Storm water Infrastructure	Eradicate backlog of roads, Bridges and Storm water drainage.	3,000,000			EQ	BLM
BLMR029	Tarring of road from Cottondale to Manyeleti phase 4. 4km	Hluvukani	Manyeleti camp	Provision of Roads, bridges and Storm water Infrastructure	Eradicate backlog of roads, Bridges and Storm water drainage.	8,000,000			National treasury	Dept of roads and Transport
BLMR030	Tarring of road, from Welverdiend Orpen road via Hluvukani to Athol Utah turnoff	Hluvukani	Wolverdiend	Provision of Roads, bridges and Storm water Infrastructure	Eradicate backlog of roads, Bridges and Storm water drainage.	35,000,000	35,000,000		MIG	EDM
BLMR031	Construction of bridge from Share to Hluvukani	Hluvukani	Share	Provision of Roads, bridges and Storm water Infrastructure	Eradicate backlog of roads, Bridges and Storm water drainage.	1, 000, 000			EQ	BLM



Bushbuckridge Local Municipality
Integrated Development Plan: Revision 2009/2010-2010/2011-2011/2012

INTEGRATED DEVELOPMENT PLAN

BLMR032	Tarring of road , Lisbon to Ximhungwe road	Lillydale	Thulamahashe & Lisbon	Provision of Roads, bridges and Storm water Infrastructure	Eradicate of backlog roads, Bridges and Storm water drainage.	4, 750, 000			National Treasury and EQ	Dept of Roads and Trans and BLM
BLMR033	Construction of Bridge: Sommerset to Lillydale	Lillydale	Sommerset	Provision of Roads, bridges and Storm water Infrastructure	Eradicate of backlog roads, Bridges and Storm water drainage.	1, 000, 000			EQ	BLM
BLMR034	Construction of Bridge: Justicia	Lillydale	Justicia	Provision of Roads, bridges and Storm water Infrastructure	Eradicate of backlog roads, Bridges and Storm water drainage.	1, 500, 000			EQ	BLM
BLMR035	Construction of Storm-water channel	Lillydale	Huntington	Provision of Roads, bridges and Storm water Infrastructure	Eradicate of backlog roads, Bridges and Storm water drainage.	1, 000, 000			EQ	BLM
BLMR036	Tarring New roads Belfast, Somersset and Justicia D4382/84	Lillydale	Belfast	Provision of Roads, bridges and Storm water Infrastructure	Eradicate of backlog roads, Bridges and Storm water drainage.	20,000,000	20,000,000		MIG	EDM
BLMR037	Paving of road, Brantan To (Alexandria) Graveyard	Mariti	Alexandria	Provision of Roads, bridges and Storm water Infrastructure	Eradicate of backlog roads, Bridges and Storm water drainage.	5,000,000			EQ	BLM
BLMR038	Construction of bridge Khulong primary school (Alexandria)	Mariti	Alexandria	Provision of Roads, bridges and Storm water Infrastructure	Eradicate of backlog roads, Bridges and Storm water drainage.	1, 000, 000			EQ	BLM
BLMR039	Tarring of road from Jim brown to Tsakane	Mariti	Jim Brown	Provision of Roads, bridges and Storm water Infrastructure	Eradicate of backlog roads, Bridges and Storm water drainage.	25,000,000			EQ	BLM
BLMR040	Tarring of road from Madiyana to Tsakane	Mariti	Tsakane	Provision of Roads, bridges and Storm water Infrastructure	Eradicate of backlog roads, Bridges and Storm water drainage.	2, 500, 000			EQ	BLM



INTEGRATED DEVELOPMENT PLAN

BLMR041	Construction of Bridge Petanenge & Fontana	Mariti	Fontana	Provision of Roads, bridges and Storm water Infrastructure	Eradicate backlog of roads, Bridges and Storm water drainage.		400,000		EQ	BLM
BLMR042	Paving of road Mkhukhumba High School To Main road	Mariti	Mariti	Provision of Roads, bridges and Storm water Infrastructure	Eradicate backlog of roads, Bridges and Storm water drainage.		4,000,000		EQ	BLM
BLMR043	Tarring of road from Thusanang to Marongwane Phase 2	Mariti	Thusanang Marongwane	Provision of Roads, bridges and Storm water Infrastructure	Eradicate backlog of roads, Bridges and Storm water drainage.	2,000,000		20,000,000	EQ	BLM
BLMR044	Paving of road Rindzani High School To Main road	Mariti	Madras	Provision of Roads, bridges and Storm water Infrastructure	Eradicate backlog of roads, Bridges and Storm water drainage.		4,000,000		EQ	BLM
BLMR045	Paving of road Lamulelani High School To Main road	Mariti	Madras	Provision of Roads, bridges and Storm water Infrastructure	Eradicate backlog of roads, Bridges and Storm water drainage.		4,000,000		EQ	BLM
BLMR046	Tarring of road, Halimela school	Mariti	Halimela	Provision of Roads, bridges and Storm water Infrastructure	Eradicate backlog of roads, Bridges and Storm water drainage.	3,000,000			EQ	BLM
BLMR047	Tarring of road from Marite to Hoxani via Madras D3973/2	Mariti	Mariti Central	Provision of Roads, bridges and Storm water Infrastructure	Eradicate backlog of roads, Bridges and Storm water drainage.		25,000,000	25,000,000	EQ	EDM
BLMR048	Tarring / paving and storm water drainage of internal streets	Mariti	Marongwane	Provision of Roads, bridges and Storm water Infrastructure	Eradicate backlog of roads, Bridges and Storm water drainage.			3,000,000	EQ	BLM
BLMR049	Tarring of road from Thusanang to Marongwane	Mariti	Thusanang	Provision of Roads, bridges and Storm water Infrastructure	Eradicate backlog of roads, Bridges and Storm water drainage.		3,000,000		EQ	BLM



INTEGRATED DEVELOPMENT PLAN

BLMR050	Construction of Bridge Mgiba Skom	Mariti	Mgiba	Provision of Roads, bridges and Storm water Infrastructure	water drainage.		3,000,000		EQ	BLM
BLMR051	Tarring / paving and storm water drainage of internal streets	Mariti	Mgiba	Provision of Roads, bridges and Storm water Infrastructure	water drainage.		3,000,000		EQ	BLM
BLMR052	Construction of Bridge, Sandford To Mariti	Mariti	Sandford B	Provision of Roads, bridges and Storm water Infrastructure	water drainage.		3,000,000		EQ	BLM
BLMR053	Construction of Bridge Makotapenini Sandford to Deep down	Mariti	Sandford B	Provision of Roads, bridges and Storm water Infrastructure	water drainage.		3,000,000		EQ	BLM
BLMR054	Paving of road from Serishe to Magraskop graveyard	Shatale	Shatale	Provision of Roads, bridges and Storm water Infrastructure	water drainage.		10,000,000		EQ	BLM
BLMR055	Construction of Speed humps	Maviljan	Maviljan location	Provision of Roads, bridges and Storm water Infrastructure	water drainage.		1,000,000	1,000,000	EQ	BLM
BLMR056	Extension of access road in Maviljan township to Matengeng	Maviljan	Maviljan location	Provision of Roads, bridges and Storm water Infrastructure	water drainage.		10,000,000	15,000,000	EQ	BLM
BLMR057	Construction of overhead bridge	Maviljan	Bushbuckridge	Provision of Roads, bridges and Storm water Infrastructure	water drainage.	3,500,000			EQ	BLM

INTEGRATED DEVELOPMENT PLAN



Bushbuckridge Local Municipality
Integrated Development Plan: Revision 2009/2010-2010/2011-2011/2012

BLMR058	Tarring of Mavijian access road	Mavijian	Bushbuckridge	Provision of Roads, bridges and Storm water Infrastructure	Eradicate backlog of roads, Bridges and Storm water drainage.	3, 000, 000			EQ	BLM
BLMR059	Reconstruction of road from Masana Hospital to Mphenyatsatsi	Mavijian	Mphenyatsatsi	Provision of Roads, bridges and Storm water Infrastructure	Eradicate backlog of roads, Bridges and Storm water drainage.	2,000,000			EQ	BLM
BLMR060	Construction of Ring road	Mavijian	Bushbuckridge	Provision of Roads, bridges and Storm water Infrastructure	Eradicate backlog of roads, Bridges and Storm water drainage.	40,000,000	30, 000, 000		MIG	BLM
BLMR061	Construction of bridge	Mavijian Mkhuhlu	Goromani	Provision of Roads, bridges and Storm water Infrastructure	Eradicate backlog of roads, Bridges and Storm water drainage.			4,000,000	National Treasury	Dept of Roads and Trans
BLMR062	Tarring of road from Hoxani to Goromani and Madras	Mkhuhlu	Goromani	Provision of Roads, bridges and Storm water Infrastructure	Eradicate backlog of roads, Bridges and Storm water drainage.	3, 000, 000			EQ/MIG	BLM
BLMR063	Construction of bridge from Thulani to Makhosana)	Mkhuhlu	Thulani	Provision of Roads, bridges and Storm water Infrastructure	Eradicate backlog of roads, Bridges and Storm water drainage.	1, 000, 000		20,000,000	EQ	BLM
BLMR064	Tarring of road from Mkhuhlu to Mashonameni. Phase 2	Mkhuhlu	Mkhuhlu	Provision of Roads, bridges and Storm water Infrastructure	Eradicate backlog of roads, Bridges and Storm water drainage.	3, 000, 000		20,000,000	EQ	BLM
BLMR065	Paving and Refurbishment of Mkhuhlu streets	Mkhuhlu	Mkhuhlu	Provision of Roads, bridges and Storm water Infrastructure	Eradicate backlog of roads, Bridges and Storm water drainage.	5,000,000			EQ	BLM
BLMR066	Tarring of road from Dospan to Ma-canget	Shatale	Dospan	Provision of Roads, bridges and Storm water Infrastructure	Eradicate backlog of roads, Bridges and Storm water drainage.			3,000,000	EQ	BLM



INTEGRATED DEVELOPMENT PLAN

BLMR067	Construction of bridge between Matlalong and Garden city tavern	Shatale	Madjembeni	Provision of Roads, bridges and Storm water Infrastructure	Eradicate backlog of roads, Bridges and Storm water drainage.	3,000,000		EQ	BLM
BLMR068	Construction of Storm water. drainage	Shatale	Thabakgolo	Provision of Roads, bridges and Storm water Infrastructure	Eradicate backlog of roads, Bridges and Storm water drainage.	3,000,000	2,000,000	EQ	BLM
BLMR069	Tarring of road from Thabakgolo to Rainbow phase 2	Shatale	Thabakgolo Rainbow Madjembeni	Provision of Roads, bridges and Storm water Infrastructure	Eradicate backlog of roads, Bridges and Storm water drainage.	5,000,000		EQ	BLM
BLMR070	Tarring of road from Shatale zone 1 to Main road	Shatale	Shatale	Provision of Roads, bridges and Storm water Infrastructure	Eradicate backlog of roads, Bridges and Storm water drainage.	4,000,000		EQ	BLM
BLMR071	Tarring of road London (Thabakgolo) to Voilet bank A phase 2 Road, 5 km	Shatale	London	Provision of Roads, bridges and Storm water Infrastructure	Eradicate backlog of roads, Bridges and Storm water drainage.	20,000,000		EQ	BLM
BLMR072	Construction of Bridge To Madjembeni Zoeknog	Shatale	Madjembeni	Provision of Roads, bridges and Storm water Infrastructure	Eradicate backlog of roads, Bridges and Storm water drainage.	3,000,000		EQ	BLM
BLMR073	Tarring of road from Voilet Bank A via Hlamalani to Demulani road	Shatale	Orinoco A	Provision of Roads, bridges and Storm water Infrastructure	Eradicate backlog of roads, Bridges and Storm water drainage.	20,000,000	25,000,000	EQ	EDM
BLMR074	Rehabilitation of streets and storm water drainage.	Shatale	Chris Hani	Provision of Roads, bridges and Storm water Infrastructure	Eradicate backlog of roads, Bridges and Storm water drainage.	3,000,000		EQ	BLM
BLMR075	Construction of bridge from Relani C Baromeng	Shatale	Relani C	Provision of Roads, bridges and Storm water Infrastructure	Eradicate backlog of roads, Bridges and Storm water drainage.	3,000,000		EQ	BLM



INTEGRATED DEVELOPMENT PLAN

BLMR076	Tarring of road from Shalden Sdlamakhosi to Relani C	Shatale	Relani C	Provision of Roads, bridges and Storm water Infrastructure	Eradicate backlog of roads, Bridges and Storm water drainage.		11,000,000	20,000,000	EQ	EDM
BLMR077	Construction of bridge from Hlamalani to Tsuvulani	Shatale	Hlamalani	Provision of Roads, bridges and Storm water Infrastructure	Eradicate backlog of roads, Bridges and Storm water drainage.	5,600,000			EQ	BLM
BLMR078	Paving of road Shatale resource centre	Shatale	Shatale township	Provision of Roads, bridges and Storm water Infrastructure	Eradicate backlog of roads, Bridges and Storm water drainage.		6,000,000		EQ	BLM
BLMR079	Tarring of road from Rainbow Madjembeni to Mphenyatsatsi D3967	Shatale	Thabakgolo	Provision of Roads, bridges and Storm water Infrastructure	Eradicate backlog of roads, Bridges and Storm water drainage.		24,000,000	30,000,000	EQ	EDM
BLMR080	tarring of road Violent bank A to Madjembeni via Thibadiboeye	Shatale	Violet Bank A	Provision of Roads, bridges and Storm water Infrastructure	Eradicate backlog of roads, Bridges and Storm water drainage.		10,000,000		EQ	BLM
BLMR081	Tarring of road from Rolle A via Edinburgh to Burlington	Thulamahashe	Edinburgh	Provision of Roads, bridges and Storm water Infrastructure	Eradicate backlog of roads, Bridges and Storm water drainage.		25,000,000	30,000,000	EQ	EDM
BLMR082	Tarring of road from Arthurseat Dingleydale to New forest	Thulamahashe	Dingleydale	Provision of Roads, bridges and Storm water Infrastructure	Eradicate backlog of roads, Bridges and Storm water drainage.		10,000,000	15,000,000	EQ	EDM
BLMR083	Tarring of road from Arthurseat Dingleydale to Thulamahashe	Thulamahashe	Thulamahashe	Provision of Roads, bridges and Storm water Infrastructure	Eradicate backlog of roads, Bridges and Storm water drainage.				EQ	BLM
BLMR084	Tarring of internal streets	Thulamahashe	Thulamahashe	Provision of Roads, bridges and Storm water Infrastructure	Eradicate backlog of roads, Bridges and Storm water drainage.	3,000,000			EQ	BLM



INTEGRATED DEVELOPMENT PLAN

Bushbuckridge Local Municipality
Integrated Development Plan: Revision 2009/2010-2010/2011-2011/2012

BLMR085	Tarring of road from Thulamahashe to Orinocco Dingleydale road	Thulamahashe town	Thulamahashe	Provision of Roads, bridges and Storm water Infrastructure	Eradicate backlog of roads, Bridges and Storm water drainage.				16,000,000	EQ	BLM
BLMR086	Construction of Bridge: Dumphries A to C	Dumphries A	Thulamahashe	Provision of Roads, bridges and Storm water Infrastructure	Eradicate backlog of roads, Bridges and Storm water drainage.	5,000,000				EQ	BLM
BLMR087	Construction of bridge from MP stream to Majeke	MP Stream	Thulamahashe	Provision of Roads, bridges and Storm water Infrastructure	Eradicate backlog of roads, Bridges and Storm water drainage.	5,000,000				EQ	BLM
BLMR088	Tarring of road from New forest to Tsuvulani Phase 2	New forest	Thulamahashe	Provision of Roads, bridges and Storm water Infrastructure	Eradicate backlog of roads, Bridges and Storm water drainage.	5,000,000				EQ	BLM

BUSHBUCKRIDGE LOCAL MUNICIPALITY

Electricity Projects

IDP NUMBER	Project Name	Project Location	Project Beneficiaries	Project Objective	Key Performance Indicator	Period/ Budget 2009/2010	Budget 2010/2011	Budget 2011/2012	Source of Funding	Implementing Agency
ES001	Electrification of Households	Shatale	Baromeng Skhukuza(87) &	Provision of Electricity	Access to electricity to households	3,600,000			Mineral Energy and	Eskom
ES002	Electrification of Households	Acomhoek	Moloro (97)	Provision of Electricity	Access to electricity to households	3,500,000			Mineral Energy and	Eskom
ES003	Electrification of Households	Acomhoek	Mosipa(47)	Provision of Electricity	Access to electricity to households	280,000			Mineral Energy and	Eskom
ES004	Electrification of Households	Agincourt	Ximhungwe(399)	Provision of Electricity	Access to electricity to households	4,000,000			Mineral Energy and	Eskom

INTEGRATED DEVELOPMENT PLAN



Bushbuckridge Local Municipality
Integrated Development Plan: Revision 2009/2010-2010/2011-2011/2012

ES005	Electrification of Households	Hluvakani	Utah (84)	Provision of Electricity	Access to electricity to households	1, 491, 500			Mineral Energy and	Eskom
ES006	Electrification of Households	Casteel	Motlamogale Ratanang(61) & Ndzaku Xintavane, Maghamuseng, Lekanang & Thembisa(32)	Provision of Electricity	Access to electricity to households	1,550,000			Mineral Energy and	Eskom
ES007	Electrification of Households	Casteel		Provision of Electricity	Access to electricity to households	270, 000			Mineral Energy and	Eskom
ES008	Electrification of Households	Mkhuhlu	Cork ka Dube (319)	Provision of Electricity	Access to electricity to households	3, 600, 000			Mineral Energy and	Eskom
ES009	Electrification of Households	Lilydale	Sommerset(60)	Provision of Electricity	Access to electricity to households	3, 000, 000			Mineral Energy and	Eskom
ES010	Electrification of Households	Mariti	Waterval RDP(66)	Provision of Electricity	Access to electricity to households	3,000,000			Mineral Energy and	Eskom
ES011	Electrification of Households	Thulamahashe	Kumani & Hokwe IPC (239)	Provision of Electricity	Access to electricity to households	3, 600, 000			Mineral Energy and	Eskom
HYMAST LIGHTS										
ES012	Installation of Hymast lights	Casteel	Lekete- 1	Provision of Electricity	Access to electricity to the community				EQ	BLM
ES013	Installation of Hymast lights	Lilydale	Lilydale- 2 (Next Nzima Bottle store) Sommerset- 2	Provision of Electricity	Access to electricity to the community				EQ	BLM
ES014	Installation of Hymast lights	Mkhuhlu	Mathibela-2 Goromani- 3	Provision of Electricity	Access to electricity to the community				EQ	BLM
ES015	Installation of Hymast lights	Dwarloop	Motibidi- 2	Provision of Electricity	Access to electricity to the community				EQ	BLM
ES016	Installation of Hymast lights	Shatale	Mokanattla station- 2 Serishe High- 1 Magraskop RDP- 1	Provision of Electricity	Access to electricity to the community				EQ	BLM
ES017	Installation of Hymast lights	Thulamahashe	New Forest - 2 Tsuvulani- 1	Provision of Electricity	Access to electricity to the community				EQ	BLM



INTEGRATED DEVELOPMENT PLAN

Bushbuckridge Local Municipality
Integrated Development Plan: Revision 2009/2010-2010/2011-2011/2012

TOTAL BUDGET		2, 500, 000				EQ	BLM	
UPGRADING OF SUBSTATION								
Project Name	Project Location	Project Beneficiaries	Project Objective	Key Indicator	Performance	Period / Budget 2008/2009	Source of Funding	Implementing Agent
Upgrading of Substation	Acornhoek	Acornhoek	Provision of Electricity supply	Eradicate Electricity	Backlog on	9,000,000	Mineral and Energy	Eskom
Electrification of house holds	BBR Communities	All Regions	Provision of Electricity supply	Eradicate Electricity	Backlog on	500, 000	Mineral and Energy	Eskom
Upgrading of Substation	Dwarsloop	N'warhele	Provision of Electricity supply	Eradicate Electricity	Backlog on	14,000,000	Mineral and Energy	Eskom
Upgrading of Substation	Lillydale	Cheetah	Provision of Electricity supply	Eradicate Electricity	Backlog on	14, 000, 000	Mineral and Energy	Eskom
Upgrading of Substation	Mkhuhlu	Mkhuhlu	Provision of Electricity supply	Eradicate Electricity	Backlog on	11,000,000	Mineral and Energy	Eskom
Upgrading of Substation	Thulamahashe	Thulamahashe	Provision of Electricity supply	Eradicate Electricity	Backlog on	14, 000, 000	Mineral and Energy	Eskom

BUSHBUCKRIDGE LOCAL MUNICIPALITY										
Waste disposal Projects										
Project ID	Project Name and number of units	Project Location	Project Beneficiaries	Project Objectives	Key Performance Indicator	Period / Budget 2009/2010	Budget 2010/2011	Budget 2011/2012	Source of Funding	Implementing Agency
BLMWD001	Construction of waste Disposal sites	Acornhoek	Acornhoek Community	Provision of Waste disposal site	Healthy Environment		1,500,000		MIG	BLM (L.E.D)
BLMWD002	Construction of waste Disposal sites	Agincourt	Agincourt Community	Provision of Waste disposal site	Healthy Environment		1,500,000		MIG	BLM (L.E.D)



INTEGRATED DEVELOPMENT PLAN

Bushbuckridge Local Municipality
Integrated Development Plan: Revision 2009/2010-2010/2011-2011/2012

BLMWD003	Implementation of waste management plan	BBR Community	All regions	Provision of Waste disposal site	Healthy Environment	1, 000, 000				MIG	BLM (L.E.D)
BLMWD004	Construction of waste Disposal sites	Casteel	Casteel Community	Provision of Waste disposal site	Healthy Environment		1,500,000			MIG	BLM (L.E.D)
BLMWD005	Construction of waste Disposal sites	Dwarsloop	Dwarsloop Community	Provision of Waste disposal site	Healthy Environment		1,500,000			MIG	BLM (L.E.D)
BLMWD006	Construction of waste Disposal sites	Hluvukani	Hluvukani Community	Provision of Waste disposal site	Healthy Environment		1,500,000			MIG	BLM (L.E.D)
BLMWD007	Construction of waste Disposal sites	Lillydale	Lillydale Community	Provision of Waste disposal site	Healthy Environment		1,500,000			MIG	BLM (L.E.D)
BLMWD008	Construction of waste Disposal sites	Mariti	Mariti Community	Provision of Waste disposal site	Healthy Environment		1,500,000			MIG	BLM (L.E.D)
BLMWD009	Construction of waste Disposal sites	Mavijian	Mavijian Community	Provision of Waste disposal site	Healthy Environment		1,500,000			MIG	BLM (L.E.D)
BLMWD010	Construction of waste Disposal sites	Shatale	Shatale Community	Provision of Waste disposal site	Healthy Environment		1,500,000			MIG	BLM (L.E.D)
BLMWD011	Construction of waste Disposal sites	Thulamahashe	Thulamahashe Community	Provision of Waste disposal site	Healthy Environment		1,500,000			MIG	BLM (L.E.D)

BUSHBUCKRIDGE LOCAL MUNICIPALITY

Housing Projects

Project ID	Project Name	Project Location	Project Beneficiaries	Project Objective	KEY Performance Indicator	Period / Budget 2009/2010	Budget 2010/2011	Budget 2011/2012	Source of Funding	Implementing Agency
BLMHL001	Construction Individual (BNG) housing subsidies	BBR Community	All Regions	Provision of houses	Access to proper housing	20, 000, 000			National Treasury	DPLGH

INTEGRATED DEVELOPMENT PLAN



Bushbuckridge Local Municipality
Integrated Development Plan: Revision 2009/2010-2010/2011-2011/2012

BLMHL002	Construction of PHP houses	BBR Community	All Regions	Provision of houses	Access to proper housing	1, 000, 000				EQ	BLM
BLMHL003	Completion of houses built during 1994 to 2002 (100 Units)	BBR Community	All Regions	Provision of houses	Access to proper housing	2, 400, 000				National Treasury	DPLGH
BLMHL004	Construction of RDP houses (100 Units)	BBR Community	All Regions	Provision of houses	Access to proper housing	6,000,000				National Treasury	DPLGH
BLMHL005	Renovation of Government buildings	Thulamahashe	Thulamahashe	Provision of Offices	Access to office space	1, 000, 000				National Treasury	Public works
BLMHL006	Renovation of Government offices	Mkhuhlu	Mkhuhlu	Provision of Offices	Access to office space	1, 000, 000				National Treasury	Public works
BLMHL007	Maviljan Housing development	Maviljan	Maviljan	Provision of Offices	Access to proper housing	20, 000, 000				National Treasury	BLM

BUSHBUCKRIDGE LOCAL MUNICIPALITY

Safety and Security

Project ID	Project Name	Project Location	Project Beneficiaries	Project Objective	KEY Performance Indicator	Period / Budget 2009/2010	Budget 2010/2011	Budget 2011/2012	Source of Funding	Implementing Agency
BLMS001	Upgrading of satellite police station	Hluvukani	Hluvukani	Safety and security	Safety Environment	2, 000, 000			Safety and security	Dept. of Safety and Security
BLMS002	Satellite Police Stations	Casteel	Casteel	Safety and Security	Safety Environment	1, 000, 000			National Treasury	Dept of safety and Security

INTEGRATED DEVELOPMENT PLAN



Bushbuckridge Local Municipality
Integrated Development Plan: Revision 2009/2010-2010/2011-2011/2012

BLMS003	Construction of new police station	Maviljan	Bushbuckridge	Safety and Security	Safety Environment	20, 000, 000			National Treasury	Dept of safety and Security
BLMS004	Magistrate court	Mkhuhlu	Mkhuhlu	Safety and Security	Safety Environment	10, 000, 000			National Treasury	DoJ
BLMS005	Magistrate offices	Acornhoek	Acornhoek	Safety and Security	Safety Environment			10, 000, 000	National Treasury	Dept of safety and Security
BLMS006	Construction of Police station	Agincourt	Ximhungwe	Safety and Security	Safety Environment			15, 000, 000	National Treasury	Dept of safety and Security
BLMS007	Construction of prison	Casteel	Casteel	Safety and Security	Safety Environment			30, 000, 000	National Treasury	Dept of correctional services
BLMS008	Construction of Municipal court	BLM	BLM	National Treasury	Dept of safety and Security		1, 000, 000		EQ	BLM

BUSHBUCKRIDGE LOCAL MUNICIPALITY

Projects from the Department of Education

Project ID	Project Name	Project Location / Circuit	Project Beneficiaries	Project Objective	KEY Performance Indicator	Period Budget 2009/2010 R	Source of Funding	Implementing Agency
BLMED001	Refurbishment of unsafe structures	Oakley	Plaattjie Primary	Refurbishment of toilets, library and computer centre	Safer structures	11 000, 00	DoE	DPW
BLMED002	Building of Classrooms	Cunningmoore	Cunningmoore Primary	Provision of Classrooms	Classrooms	11, 836, 00	DoE	DPW
BLMED003	Refurbishment of unsafe structures	Lehukwe	Ntsoenyane Primary	Refurbishment of toilets, library and computer centre	Safer structures	9 000, 00	DoE	DPW



INTEGRATED DEVELOPMENT PLAN

BLMED004	Building of classrooms	Mahlale Secondary	Welverdiend	Provision of Classrooms	classrooms	12, 199. 00	DoE	DPW
BLMED005	Refurbishment of unsafe structures	Mariti	Halemela Secondary	Refurbishment of toilets, library and computer centre	Safer structures	15 000, 00	DoE	DPW
BLMED006	Building of classrooms	Maviljan	Bushbuckridge Secondary	Provision of Classrooms	Classrooms	7, 000, 00	DoE	DPW
BLMED007	Building of additional classrooms	Nkwenkwezi Primary	Dwarsloop	Provision of Classrooms	Classrooms	24, 432. 00	DoE	DPW
BLMED008	Building of Classrooms	Rooiboklaagte	Chueu Primary	Provision of Classrooms	Classrooms	11, 981, 00	DoE	DPW
BLMED009	Renovations of classrooms	Agincourt	Zogode	Provision of Classrooms	Classrooms	155 610	DoE	DPW
BLMED010	Renovations of classrooms	Casteel	Lekanang	Provision of Classrooms	Classrooms	127 80.65	DoE	DPW
BLMED011	Renovations of classrooms	Cottendale	Sehlekyabe	Provision of Classrooms	Classrooms	109 850	DoE	DPW
BLMED012	Renovations of classrooms	Greenvalley	Magwagwaza	Provision of Classrooms	Classrooms	188 640	DoE	DPW
BLMED013	Renovations of classrooms	Greenvalley	Mahashe	Provision of Classrooms	Classrooms	169 600	DoE	DPW
BLMED014	Renovations of classrooms	Regional Office	Hoxani EDC	Provision of Classrooms	Classrooms	280 481.52	DoE	DPW
BLMED015	Renovations of classrooms	Lehukwe	Tiyimeleni	Provision of Classrooms	Classrooms	137 628.46	DoE	DPW
BLMED016	Renovations of classrooms	Lehukwe	Mavimbela	Provision of Classrooms	Classrooms	323 484	DoE	DPW
BLMED017	Renovations of classrooms	Dwarsloop	Dwarsloop Circuit	Provision of Classrooms	Classrooms	42 339.96	DoE	DPW
BLMED018	Renovations of classrooms	Manyeleti	Mugena	Provision of Classrooms	Classrooms	44 318.61	DoE	DPW

INTEGRATED DEVELOPMENT PLAN



Bushbuckridge Local Municipality
Integrated Development Plan: Revision 2009/2010-2010/2011-2011/2012

BLMED019	Renovations of classrooms	Manyeleti	Nxalati	Provision of Classrooms	Classrooms	78 000	DoE	DPW
BLMED020	Renovations of classrooms	Mavijan	Burney	Provision of Classrooms	Classrooms	154 990	DoE	DPW
BLMED021	Renovations of classrooms	Mavijan	Bushbuckridge	Provision of Classrooms	Classrooms	176 637.30	DoE	DPW
BLMED022	Renovations of classrooms	Mavijan	Mavijan	Provision of Classrooms	Classrooms	103 770.26	DoE	DPW
BLMED023	Renovations of classrooms and removal of asbestos roof. Block and cleaning of ceiling	Mkhuhlu	Phaphama	Provision of Classrooms	Classrooms	491 368.50	DoE	DPW
BLMED024	Renovations of classrooms	Mkhuhlu	Gezinqondho	Provision of Classrooms	Classrooms	9 349	DoE	DPW
BLMED025	Renovations of classrooms	Mkhuhlu	Madzuma	Provision of Classrooms	Classrooms	121 735.79	DoE	DPW
BLMED026	Renovations of classrooms	Mkhuhlu	Twasani	Provision of Classrooms	Classrooms	129 988.50	DoE	DPW
BLMED027	Renovations of classrooms	Shatale	Relani	Provision of Classrooms	Classrooms	112 110	DoE	DPW
BLMED028	Renovations of classrooms	Shatale	Sedibeng	Provision of Classrooms	Classrooms	112 741	DoE	DPW
BLMED029	Renovations of classrooms	Thulamahashe	Mzimba	Provision of Classrooms	Classrooms	376 935.30	DoE	DPW
BLMED030	Renovations of classrooms	Ximhungwe	Hlomani	Provision of Classrooms	Classrooms	401 475	DoE	DPW
BLMED031	Renovations of classrooms	Ximhungwe	Njonjela	Provision of Classrooms	Classrooms	148 781.40	DoE	DPW
BLMED032	Renovations of classrooms	Ximhungwe	Bondzeni	Provision of Classrooms	Classrooms	468 576.50	DoE	DPW

INTEGRATED DEVELOPMENT PLAN



Bushbuckridge Local Municipality
Integrated Development Plan: Revision 2009/2010-2010/2011-2011/2012

SANITATION FOR SCHOOLS									
BLMED033	Sanitation for schools	Agincourt	Langa Daniye	Provision of Sanitation	Sanitation		DoE	DPW	
BLMED034	Sanitation for schools	Arthurseat	Lekete Maripe	Provision of Sanitation	Sanitation		DoE	DPW	
BLMED035	Sanitation for schools	Cottendale	Madile Mpisi	Provision of Sanitation	Sanitation		DoE	DPW	
BLMED036	Sanitation for schools	Casteel	MO Mashego Matlushe Motlamogale	Provision of Sanitation	Sanitation		DoE	DPW	
BLMED037	Sanitation for schools	Dwarsloop	Saselani Hlamalani	Provision of Sanitation	Sanitation		DoE	DPW	
BLMED038	Sanitation for schools	Greenvalley	Magwagwaza Maotole	Provision of Sanitation	Sanitation		DoE	DPW	
BLMED039	Sanitation for schools	Lehukwe	Alexandria Cunnningmoore	Provision of Sanitation	Sanitation		DoE	DPW	
BLMED040	Sanitation for schools	Manyeleti	Hlalakahle N'wamacingele Matikinya	Provision of Sanitation	Sanitation		DoE	DPW	
BLMED041	Sanitation for schools	Marite	Marongwane Primary	Provision of Sanitation	Sanitation		DoE	DPW	
BLMED042	Sanitation for schools	Maviljan	Ntfile Magabotse	Provision of Sanitation	Sanitation		DoE	DPW	
BLMED043	Sanitation for schools	Mkhuhlu	Thwasani Pensele Matikwana	Provision of Sanitation	Sanitation		DoE	DPW	

INTEGRATED DEVELOPMENT PLAN



Bushbuckridge Local Municipality
Integrated Development Plan: Revision 2009/2010-2010/2011-2011/2012

BLMED044	Sanitation for schools	Shatale	Matlolane Letshele	Provision of Sanitation	Sanitation		DoE	DPW
TOTAL BUDGET							R 2 000 000.00	DPW
WATER FOR SCHOOLS								
BLMED045	Water for schools	Cottondale	Ekson Masotja Chiloane	Provision of water	Water		DWAF	DPW
BLMED046	Water for schools	Cottondale	Thepanang	Provision of water	Water		DWAF	DPW
BLMED047	Water for schools	Cottondale	Sebosegolo sa Mapulana	Provision of water	Water		DWAF	DPW
BLMED048	Water for schools	Lehukwe	Hlangalezwe	Provision of water	Water		DWAF	DPW
BLMED049	Water for schools	Arthurseat	N.P Mathabela	Provision of water	Water		DWAF	DPW
BLMED050	Water for schools		Moholoholo	Provision of water	Water		DWAF	DPW
BLMED051	Water for schools	Cottondale	Semonate	Provision of water	Water		DWAF	DPW
BLMED052	Water for schools	Arthurseat	Phatsedi	Provision of water	Water		DWAF	DPW

INTEGRATED DEVELOPMENT PLAN



Bushbuckridge Local Municipality
Integrated Development Plan: Revision 2009/2010-2010/2011-2011/2012

BLMED053	Water for schools	Mariti	Skapa Ndoda Mashabiya	Provision of water	Water		DWAF	DPW
BLMED054	Water for schools	Agincourt	Nyamande	Provision of water	Water		DWAF	DPW
BLMED055	Water for schools	Mariti	N'wamahumana	Provision of water	Water		DWAF	DPW
BLMED056	Water for schools	Arthurseat	Lethipele	Provision of water	Water		DWAF	DPW
BLMED057	Water for schools	Cottendale	Letsaille Chiloane	Provision of water	Water		DWAF	DPW
BLMED058	Water for schools	Mariti	Makorompane	Provision of water	Water		DWAF	DPW
BLMED059	Water for schools	Arthurseat	Senianya	Provision of water	Water		DWAF	DPW
BLMED060	Water for schools	Manyeleti	Matikinya	Provision of water	Water		DWAF	DPW
BLMED061	Water for schools	Cottendale	Mhlangana	Provision of water	Water		DWAF	DPW
BLMED062	Water for schools	Mariti	M.P. Mokoena	Provision of water	Water		DWAF	DPW
BLMED063	Water for schools	Dwarsloop	Gokisa	Provision of water	Water		DWAF	DPW

INTEGRATED DEVELOPMENT PLAN



Bushbuckridge Local Municipality
Integrated Development Plan: Revision 2009/2010-2010/2011-2011/2012

BLMED064	Water for schools	Ximhungwe	Mandondo	Provision of water	Water		DWAF	DPW
BLMED065	Water for schools	Dwarsloop	Soshangane	Provision of water	Water		DWAF	DPW
BLMED066	Water for schools	Mariti	Madukulushhe	Provision of water	Water		DWAF	DPW
BLMED067	Water for schools	Lehukwe	Tamajane	Provision of water	Water		DWAF	DPW
BLMED068	Water for schools	Cottendale	Mphaku	Provision of water	Water		DWAF	DPW
BLMED069	Water for schools	Ximhungwe	Ngaleni	Provision of water	Water		DWAF	DPW
BLMED070	Water for schools	Arthurseat	Arthurseat	Provision of water	Water		DWAF	DPW
BLMED071	Water for schools	Mariti	Mathipe	Provision of water	Water		DWAF	DPW
BLMED072	Water for schools	Marit	Bakutswe	Provision of water	Water		DWAF	DPW
BLMED073	Water for schools	Thulamahashe	Ndwandwe	Provision of water	Water		DWAF	DPW
BLMED074	Water for schools	Shatale	Mmasekobe	Provision of water	Water		DWAF	DPW
BLMED075	Water for schools	Mariti	Halemela	Provision of water	Water		DWAF	DPW

INTEGRATED DEVELOPMENT PLAN



Bushbuckridge Local Municipality
Integrated Development Plan: Revision 2009/2010-2010/2011-2011/2012

TOTAL BUDGET				R 2 000, 000	DWAF	DPW
---------------------	--	--	--	---------------------	------	-----

BUSHBUCKRIDGE LOCAL MUNICIPALITY										
HEALTH PROJECTS										
Project ID	Project Name	Project Location	Project Beneficiaries	Project Objective	KEY Performance Indicator	Period / Budget 2009/2010	Budget 2010/2011	Budget 2011/2012	Source of Funding	Implementing Agency
BLMH001	New clinic	Acornhoek	Acornhoek	Provision of Hospitals, Health centers and Clinics	Eradicate backlog on Health Facilities		7,000,000		National Treasury	Dept Public Works
BLMH002	New clinic	Acornhoek	Brooklyn	Provision of Hospitals, Health centers and Clinics	Eradicate backlog on Health Facilities		5,000,000	-	National Treasury	Dept Public Works
BLMH003	New clinic	Acornhoek	Buffelshoek	Provision of Hospitals, Health centers and Clinics	Eradicate backlog on Health Facilities		5,000,000		National Treasury	Dept Public Works
BLMH004	New clinic	Agincourt	Xanthia	Provision of Hospitals, Health centers and Clinics	Eradicate backlog on Health Facilities	100, 000		-	National Treasury	Dept Public Works
BLMH005	New clinic	Dwarsloop	Dwarsloop	Provision of Hospitals, Health centers and Clinics	Eradicate backlog on Health Facilities	3, 500, 000			National Treasury	Dept Public Works



INTEGRATED DEVELOPMENT PLAN

BLMH006	New clinic	Hluvkani	Hluvkani	Provision of Hospitals, Health centers and Clinics	Eradicate backlog on Health Facilities		7,000,000		National Treasury	Dept Public Works
BLMH007	New clinic	Hluvkani	Ludlow	Provision of Hospitals, Health centers and Clinics	Eradicate backlog on Health Facilities		5,000,000		National Treasury	Dept Public Works
BLMH008	New clinic	Hluvkani	Tihavekisa	Provision of Hospitals, Health centers and Clinics	Eradicate backlog on Health Facilities		8,000,000		National Treasury	Dept Public Works
BLMH009	New clinic	Hluvkani	Utah A & B	Provision of Hospitals, Health centers and Clinics	Eradicate backlog on Health Facilities		7,000,000	-	National Treasury	Dept Public Works
BLMH010	New clinic	Mariti	Alexandria	Provision of Hospitals, Health centers and Clinics	Eradicate backlog on Health Facilities		-	8,000,000	National Treasury	Dept Public Works
BLMH011	Pay points	Mavijian	Bushbuck Ridge	Provision of Hospitals, Health centers and Clinics	Eradicate backlog on Health Facilities	1,500,000			National Treasury	Dept Public Works
BLMH012	New clinic	Mkhuhlu	Calcutta B	Provision of Hospitals, Health centers and Clinics	Eradicate backlog on Health Facilities			8,000,000	National Treasury	Dept Public Works
BLMH013	Upgrade clinic	Mkhuhlu	Oakley	Provision of Hospitals, Health centers and Clinics	Eradicate backlog on Health Facilities		5,000,000	-	National Treasury	Dept Public Works



INTEGRATED DEVELOPMENT PLAN

Bushbuckridge Local Municipality
Integrated Development Plan: Revision 2009/2010-2010/2011-2011/2012

BLMH014	New clinic	Thulamahashe	Dingleydale	Provision of Hospitals, Health centers and Clinics	Eradicate backlog on Health Facilities		3,000,000	-	National Treasury	Dept Public Works
BLMH015	Renovation of Mapulaneng Hospital	Mavijian	Bushbuckridge	Provision of Hospitals, Health centers and Clinics	Eradicate backlog on Health Facilities	1,500,000		-	National Treasury	Dept Public Works

BUSHBUCKRIDGE LOCAL MUNICIPALITY

Spatial Planning and Land Use Management

Project ID	Project Name	Project Location	Project Beneficiaries	Project Objective	KEY Performance Indicator	Period Budget 2009/2010 R	Period Budget 2010/2011 R	Period Budget 2011/2012 R	Source of Funding	Implementing Agency
BLMLU001	Public precinct, 3 overhead bridges over railway line including Greening street lighting and paving.	Acornhoek	Acornhoek	Enhance the Neighborhoods for socio-economic development	Neighborhoods development	17, 000, 000			NDPG	BLM
BLMLU002	Thusong centre (one stop shop and state of Art) including Greening street lighting and paving.	Bushbuckridge/ Mavijian	Bushbuckridge/ Mavijian	Enhance the Neighborhood for socio-economic development	Neighborhood development	44, 000, 000			NDPG	BLM
BLMLU003	Formalization/ Land tenure upgrading	Acornhoek	Acornhoek Ka-zitha	Improve security of tenure	Tenure security		1,000,000		EQ	BLM
BLMLU004	Formalization/ Land tenure upgrading	Agincourt	Agincourt	Improve security of tenure	Tenure security		500, 000		EQ	BLM



BUSHBUCKRIDGE LOCAL MUNICIPALITY

Spatial Planning and Land Use Management

Project ID	Project Name	Project Location	Project Beneficiaries	Project Objective	KEY Performance Indicator	Period Budget 2009/2010 R	Period Budget 2010/2011 R	Period Budget 2011/2012 R	Source of Funding	Implementing Agency
BLMLU005	Formalization/ Land tenure upgrading	Casteel	Casteel	Improve security of tenure	Tenure security		500, 000		EQ	BLM
BLMLU006	Formalization/ Land tenure upgrading	Dwarsloop	Arthurstone	Improve security of tenure	Tenure security		500, 000		EQ	BLM
BLMLU007	Formalization/ Land tenure upgrading	Dwarsloop	Dwarsloop	Improve security of tenure	Tenure security	1, 000, 000	500, 000		EDM	BLM
BLMLU008	Educational precinct, Sport precinct	Dwarsloop	Dwarsloop	Enhance the Neighborhood for socio-economic development	Neighborhood development	17, 000, 000			NDPG	BLM
BLMLU009	Formalization/ Land tenure upgrading	HluvuKani	HluvuKani Weverdiend Isington	Improve security of tenure	Tenure security		1,500,000		EQ	BLM
BLMLU010	Formalization/ Land tenure upgrading	Lillydale	Lillydale	Improve security of tenure	Tenure security		500, 000		EQ	BLM
BLMLU011	Shopping complex	Mariti	Mariti	Improve security of tenure	Tenure security				Private sector	Private sector
BLMLU012	Formalization/ Land tenure upgrading	Mariti	Waterval Mariti	Improve security of tenure	Tenure security		1,000,000		EQ	BLM



BUSHBUCKRIDGE LOCAL MUNICIPALITY

Spatial Planning and Land Use Management

Project ID	Project Name	Project Location	Project Beneficiaries	Project Objective	KEY Performance Indicator	Period Budget 2009/2010 R	Period Budget 2010/2011 R	Period Budget 2011/2012 R	Source of Funding	Implementing Agency
BLMLU013	Formalization of College view	Mavijian	College View	Improve security of tenure	Tenure security	1, 000, 000			EQ	BLM
BLMLU014	Formalization of CBD Urban renewal project	Mavijian	Bushbuckridge	Enhance the Neighborhoods for socio-economic development	Neighborhood development	12, 801, 000			NDPG	BLM
BLMLU015	Tourism precinct, cultural center, and heritage centre. Including Greening street lighting and paving.	Mkhuhlu	Mkhuhlu	Enhance the Neighborhoods for socio-economic development	Neighborhood development	39, 000, 000			NDPG	BLM
BLMLU016	Formalization/ Land tenure upgrading	Mkhuhlu	Mkhuhlu Town and Malubane	Improve security of tenure	Tenure security	1, 000, 000			EQ	BLM
BLMLU017	Construction of Shatale sport precinct, Community hall and Library	Shatale	Shatale	Enhance the Neighborhood for socio-economic development	Neighborhoods development	63, 000, 000			NDPG	BLM
BLMLU018	Formalization of Mandela Village	Shatale	Shatale Township	Improve security of tenure	Tenure security	1, 500, 000			EDM	BLM
BLMLU019	Educational Precinct, 3 Community park and 1 community hall. Including	Thulamahashe	Thulamahashe	Enhance the Neighborhood for socio-economic development	Neighborhood development	29, 000, 000			NDPG	BLM

INTEGRATED DEVELOPMENT PLAN



Bushbuckridge Local Municipality
Integrated Development Plan: Revision 2009/2010-2010/2011-2011/2012

BUSHBUCKRIDGE LOCAL MUNICIPALITY

Spatial Planning and Land Use Management

Project ID	Project Name	Project Location	Project Beneficiaries	Project Objective	KEY Performance Indicator	Period Budget 2009/2010 R	Period Budget 2010/2011 R	Period Budget 2011/2012 R	Source of Funding	Implementing Agency
	Greening street lighting and paving.									
BLMLU020	Formalization/ Land tenure upgrading	Thulamahashe	Thulamahashe A, B and C	Improve security of tenure	Tenure security	1, 000, 000			EDM	BLM
BLMLU021	Review of SDF	BBR Community	All regions	Provision of spatial framework for development planning	Revised strategy	500, 000			EQ	BLM
BLMLU023	Land Use management system	BBR Community	All regions	Secure land for proper development	Eradication of land invasion			1, 000, 000	EQ	BLM

BUSHBUCKRIDGE LOCAL MUNICIPALITY

Local Economic Development projects

INTEGRATED DEVELOPMENT PLAN



Bushbuckridge Local Municipality
Integrated Development Plan: Revision 2009/2010-2010/2011-2011/2012

Project ID	Project Name	Project Location	Project Beneficiaries	Project Objective	KEY Performance Indicator	Period / Budget 2009/2010	Budget 2010/2011	Budget 2011/2012	Source of Funding	Implementing Agency
BLML001	Business processing outsourcing and small industries technology centers	BBR Community	All regions	Promotion of Local Economic Development	Better life for All	R325, 000			Dept. of Economic Development	Dept. of Economic Development
BLML002	Food Processing Centre	BBR Community	All regions	Promotion of Local Economic Development	Better life for All	R500, 000			Dept. of Economic Development	Dept. of Economic Development
BLML003	Informal trading facilities (Market Stalls)	Acomhoek	Acomhoek	Job creation and poverty alleviation	Better life for All		1,000,000		MIG	BLM
BLML004	Tourism resort	Agincourt	Khayelihle / Nkuweni	Job creation and poverty alleviation	Better life for All		3,000,000		National Treasury	DEAT
BLML005	Morula Project	Agincourt	Newington	Job creation and poverty alleviation	Better life for All		1,000,000		National Treasury	DEAT
BLML006	Ulusaba Amashangana Safari Lodge	Agincourt	Newington	Job creation and poverty alleviation through tourism development	Tourism Development	20, 000, 000			Private sector	MABEDI
BLML007	Renovation/ Commercialization of Andover and Manyeleti	Hluvukani	Manyeleti / Andover	Job creation and poverty alleviation	Better life for All	9,000,000			National Treasury	MTPA
BLML008	Utah Game Lodge	Hluvukani	Utah	Job creation and poverty alleviation	Better life for All	10, 000, 000			National Treasury	DEAT
BLML009	Minisi resort	Hluvukani	Welverdiend	Job creation and poverty alleviation	Better life for All	5,000,000			National Treasury	DEAT
BLML010	Socio Biofuel pilot project	Hluvukani	Hluvukani Burlington Huttington Islington	Job creation and poverty alleviation	Better life for All	28, 000, 000			DME and Dept of Economic Development and planning	Private sector

INTEGRATED DEVELOPMENT PLAN



Bushbuckridge Local Municipality
Integrated Development Plan: Revision 2009/2010-2010/2011-2011/2012

BMLM011	Inyaka Dam Resort Development	Mavijian	Mavijian	Mavijian	Job creation and poverty alleviation	Better life for All		25,000,000	25,000,000	National Treasury	DEAT
BMLM012	Nature Reserve Development	Mavijian	Mavijian	Mavijian	Job creation and poverty alleviation	Better life for All		15,000,000	10,000,000 -	National Treasury	DEAT
BMLM013	SMME Hub	Mavijian	All regions	All regions	Job creation and poverty alleviation through provision of alternative energy	SMMEs development				Anglo Coal	Anglo Coal
BMLM014	Resuscitation of Irrigation scheme	Mkhuhlu	Hoxani	Hoxani	Job creation and poverty alleviation	Better life for All	10,000,000			National treasury	DALA
BMLM015	Recycling plant	Mkhuhlu	Mkhuhlu Industrial	Mkhuhlu Industrial	Job creation and poverty alleviation	Better life for All	1,800,000			Buyisa-E-Bag	Buyisa-E-Bag
BMLM016	Maize mill	Mkhuhlu	Mkhuhlu Industrial	Mkhuhlu Industrial	Job creation and poverty alleviation	Better life for All	1,500,000			DALA	DALA
BMLM017	Meat - cattle & poultry processing plants	Mkhuhlu	Mkhuhlu Industrial	Mkhuhlu Industrial	Job creation and poverty alleviation	Better life for All		3,000,000	12,500,000	National Treasury	Agric
BMLM018	Sabie River Safari Lodge	Mkhuhlu	Mkhuhlu	Mkhuhlu	Job creation and poverty alleviation through tourism development	Tourism Development	17,000,000			Private sector	MABEDI
BMLM019	Tourism Development	Lillydale	Cork Thulani	Cork Thulani	Job creation and poverty alleviation	Better life for All	10,000,000	5,000,000		National Treasury	DEAT
BMLM020	Resuscitation of irrigation scheme	Lillydale	Saringwa	Saringwa	Job creation and poverty alleviation	Better life for All	11,000,000			National Treasury	DALA
BMLM021	Magwanza Resort Development	Mkhuhlu	Magwanza Game Lodge	Magwanza Game Lodge	Job creation and poverty alleviation	Better life for All	5,000,000			National Treasury	DEAT
BMLM022	Farming and Dairy project	Casteel	Zoeknog	Zoeknog	Job creation and poverty alleviation	Better life for All	10,000,000			National Treasury	Agric
BMLM023	Kruger to Canyon biosphere	BBR	All regions	All regions	Job creation and poverty alleviation	Better life for All	28,000,000			National Treasury	DEAT

INTEGRATED DEVELOPMENT PLAN



Bushbuckridge Local Municipality
Integrated Development Plan: Revision 2009/2010-2010/2011-2011/2012

Project ID	Project Name	Project Location	Project Beneficiaries	Project Objective	KEY Performance Indicator	Period / Budget 2009/2010	Budget 2010/2011	Budget 2011/2012	Source of Funding	Implementing Agency
BLML024	Masibuyele emasimini	BBR	Bushbuckridge north	alleviation	Better life for All	17, 500, 000			National Treasury	DALA
BLML025	BBR Nature Reserve	Maviljan	Dwarsloop	Job creation and poverty alleviation	Better life for All	5 000 000			National Treasury	MTPA
BLML026	Shopping complex	Dwarsloop	Dwarsloop	Improve security of tenure	Tenure security				Private Sector	Private Sector
BLML027	Shopping complex	Hluvukani	Hluvukani	Improve security of tenure	Tenure security				Private sector	Private sector
BLML028	Shopping complex	Mariti	Mariti	Improve security of tenure	Tenure security				Private sector	Private sector
BLML029	Renovation of Old BBR complex and building of new offices	Bushbuckridge	Bushbuckridge	Improve security of tenure	Tenure security				Private Sector	Old Mutual

BUSHBUCKRIDGE LOCAL MUNICIPALITY

Municipal Institution

Project ID	Project Name	Project Location	Project Beneficiaries	Project Objective	KEY Performance Indicator	Period / Budget 2009/2010	Budget 2010/2011	Budget 2011/2012	Source of Funding	Implementing Agency
BLMM001	Construction of Disaster management centre	Dwarsloop	Dwarsloop	Effective and efficient Administration	Viable governance	7, 000, 000			MSIG	EDM
BLMM002	Extension of Municipal Offices	Maviljan	BLM	Effective and efficient Administration	Viable governance	1, 000, 000			EQ	BLM
BLMM003	Construction of parking and Landscaping	Maviljan	BLM	Effective and efficient Administration	Viable governance	1, 000, 000			EQ	BLM

INTEGRATED DEVELOPMENT PLAN



Bushbuckridge Local Municipality
Integrated Development Plan: Revision 2009/2010-2011/2012

BLMM004	Extension of offices	Mavijian Hluvukani	Mavijian Hluvukani	Effective and efficient Administration	Viabale governance	2, 500, 000				EQ	BLM
BLMM005	Development of disaster management plan	BBR	All regions	Effective and efficient Administration	Viabale governance	500, 000				EQ	BLM

BUSHBUCKRIDGE LOCAL MUNICIPALITY

Sports, Culture and Heritage

Project ID	Project Name	Project Location	Project Beneficiaries	Project Objective	KEY Performance Indicator	Period / Budget 2009/2010	Budget 2010/2011	Budget 2011/2012	Source of Funding	Implementing Agency
BLMSP001	Moholoholo Battle field Heritage site	Acornhoek	Moholoholo	Access to sport, culture and recreation	Recreational facilities	3,000,000			National Treasury	DCSR
BLMSP002	Sport Facilities	Acornhoek	Rooiboklaagte (Champagne)	Access to sport, culture and recreation	Recreational facilities		8,000,000		National Treasury & MIG	DCSR & BLM
BLMSP003	Sport Facilities	Acornhoek/Green Valley	Acornhoek	Access to sport, culture and recreation	Recreational facilities		2,000,000	7,000,000	National Treasury & MIG	DCSR & BLM
BLMSP004	Sport Facilities	Agincourt	Ximhungwe	Access to sport, culture and recreation	Recreational facilities	2,000,000			EQ	BLM
BLMSP005	Identification of Heritage site	BBR	All villages	Access to sport, culture and recreation	Recreational facilities		10,000,000		National Treasury & MIG	DCSR & BLM
BLMSP006	Development of Community parks.	BBR	Timbavati Casteel Newington MP Stream	Access to sport, culture and recreation	Recreational facilities		2,000,000		National Treasury & MIG	DCSR & BLM
BLMSP007	District public viewing site(2010 Soccer)	BBR Community	To be identified	Access to sport, culture and recreation	Recreational facilities	5,000,000			National Treasury	EDM
BLMSP008	Greening Bushbuckridge (in Schools, Libraries and Health facilities)	BBR Community	To be identified	Access to sport, culture and recreation	Recreational facilities	1,000,000			National Treasury	DCSR



INTEGRATED DEVELOPMENT PLAN

BLMSP009	Construction of Sport Fields phase 2	Casteel	Casteel	Access to sport, culture and recreation	Recreational facilities	1, 000, 000	2, 000, 000	EQ	BLM
BLMSP010	Construction of Sport Fields	Dwarsloop	Dwarsloop	Access to sport, culture and recreation	Recreational facilities	1, 500, 000	818, 400	National Treasury & MIG	BLM
BLMSP011	Construction of Sport Fields phase 2	Hluvukani	Hluvukani	Access to sport, culture and recreation	Recreational facilities	2, 000, 000		National Treasury & MIG	BLM
BLMSP012	Construction of Sport Fields phase 2	Mariti	Mariti Mathibela	Access to sport, culture and recreation	Recreational facilities	1, 500, 000	1, 250, 000	National Treasury & MIG	BLM
BLMSP013	Mkhuhlu stadium phase 2	Mkhuhlu	Mkhuhlu	Access to sport, culture and recreation	Recreational facilities	3, 000, 000	200, 000	National Treasury & MIG	DCSR & BLM
BLMSP014	Sports Complex	Shatale	Shatale	Access to sport, culture and recreation	Recreational facilities	1, 500, 000	3, 000, 000	National Treasury & MIG	DCSR & BLM
BLMSP015	Construction of basketball, Boxing hall, Tennis court and swimming pool.	Thulamahashe	Thulamahashe	Access to sport, culture and recreation	Recreational facilities	2, 000, 000		National Treasury & MIG	DCSR & BLM
BLMSP016	Construction of Athletics tracks; Thulamahashe Stadium	Thulamahashe	Thulamahashe	Access to sport, culture and recreation	Recreational facilities	4, 000, 000		EQ	BLM

BUSHBUCKRIDGE LOCAL MUNICIPALITY

Community Support Services Projects

INTEGRATED DEVELOPMENT PLAN



Bushbuckridge Local Municipality
Integrated Development Plan: Revision 2009/2010-2010/2011-2011/2012

Project ID	Project Name	Project Location	Project Beneficiaries	Project Objective	KEY Performance Indicator	Period / Budget 2009/2010	Budget 2010/2011	Budget 2011/2012	Source of Funding	Implementing Agency
BLMC001	Parks	Acornhoek	Acornhoek	Provision of parks	Recreational facilities		500,000		EQ	BLM
BLMC002	Parks	Acornhoek	Cottondale	Provision of parks	Recreational facilities			500,000	EQ	BLM
BLMC003	Libraries	Acornhoek	Acornhoek	Provision of Libraries	Recreational facilities		6,000,000		EQ	Sports , Arts and culture
BLMC004	Disabled Centres	Acornhoek	Acornhoek	Provision of facilities	Recreational facilities			5,000,000	EQ	BLM
BLMC005	Fencing Cemeteries	Acornhoek	Acornhoek	Provision of fencing	Protection of Heritage sites		500,000		EQ	BLM
BLMC006	Parks	Agincourt	Newington A	Provision of parks	Recreational facilities		500,000		EQ	BLM
BLMC007	Regional Office	Agincourt	Agincourt	Provision of office/ Facilities	Recreational facilities		3,000,000		EQ	BLM
BLMC008	Parks	Agincourt	Agincourt RDP	Provision of parks	Recreational facilities		500,000		EQ	BLM
BLMC009	Libraries	Agincourt	Ximhungwe	Provision of Libraries	Recreational facilities		6,000,000		EQ	BLM
BLMC010	Halls	Agincourt	Ximhungwe	Provision of Hall	Recreational facilities		500,000		EQ	BLM
BLMC011	Fencing Cemeteries	Agincourt	Agincourt	Provision of fencing	Protection of Heritage sites		500,000		EQ	BLM
BLMC012	Trauma centre	BBR	BBR	Provision of Trauma center	Recreational facilities		1,000,000		EQ	BLM
BLMC013	Parks	Casteel	Casteel MPCC	Provision of parks	Recreational facilities			500,000	EQ	BLM
BLMC014	Halls	Dwarsloop	Dwarsloop Township	Provision of parks	Recreational facilities		1,500,000		EQ	BLM

INTEGRATED DEVELOPMENT PLAN



Bushbuckridge Local Municipality
Integrated Development Plan: Revision 2009/2010-2010/2011-2011/2012

BLMC015	Regional Office phase 2	Dwarsloop	Dwarsloop	Dwarsloop	Provision of office/ Facilities	Recreational facilities		3,000,000		EQ	BLM
BLMC016	Park	Dwarsloop	Dwarsloop	Dwarsloop Township	Provision of parks	Recreational facilities		500,000		EQ	BLM
BLMC017	Gymnasium	Dwarsloop	Dwarsloop	Dwarsloop Township	Provision of Gymnasium	Recreational facilities		3,000,000		EQ	BLM
BLMC018	Fencing Cemeteries	Dwarsloop	Dwarsloop	Dwarsloop	Provision of fencing	Protection of Heritage sites		5,000,000		EQ	BLM
BLMC019	Halls	Hluvukani	Hluvukani	Hluvukani	Provision of Hall	Recreational facilities		1,500,000		EQ	BLM
BLMC020	Parks	Hluvukani	Hluvukani	Hluvukani	Provision of parks	Recreational facilities		500,000		EQ	BLM
BLMC021	Libraries	Hluvukani	Hluvukani	Hluvukani	Provision of Libraries	Recreational facilities		1,500,000		EQ	BLM
BLMC022	Cemeteries	Hluvukani	Hluvukani	Hluvukani	Provision of fencing	Recreational facilities		5,000,000		EQ	BLM
BLMC023	Building of regional office	Hluvukani & Maviljan	Hluvukani	Hluvukani	Provision of office/ Facilities	Availability of office space		1,000,000		EQ	BLM
BLMC024	Parks	Lillydale	Lillydale	Lillydale A	Provision of parks	Recreational facilities		500,000		EQ	BLM
BLMC025	Libraries	Lillydale	Lillydale	Lillydale	Provision of Libraries	Recreational facilities		6,000,000		EQ	BLM
BLMC026	Fencing Cemeteries	Lillydale	Lillydale	Lillydale	Provision of Hall	Protection of Heritage sites		500,000		EQ	BLM
BLMC027	Parks	Mariti	Mariti	Waterval	Provision of parks	Recreational facilities		500,000		EQ	BLM
BLMC028	Libraries	Mariti	Mariti	Mariti	Provision of Libraries	Recreational facilities		1,500,000		EQ	BLM
BLMC029	Cemeteries	Mariti	Mariti	Mariti	Provision of fencing	Protection of Heritage sites		500,000		EQ	BLM

INTEGRATED DEVELOPMENT PLAN



Bushbuckridge Local Municipality
Integrated Development Plan: Revision 2009/2010-2010/2011-2011/2012

	Disabled Centers	Mariti	Mariti	Provision of facilities	Recreational facilities	6, 000, 000				EQ	BLM
BLMC030	Libraries	Maviljan	Mariti	Provision of Libraries	Recreational facilities					EQ	BLM
BLMC031	Construction of Hall and Child care facility	Maviljan	Maviljan	Provision of Hall and Child care facility	Recreational facilities	5, 000, 000	1, 500, 000	2, 609, 014		EQ	BLM
BLMC032	Parks	Maviljan	Maviljan	Provision of parks	Recreational facilities		500, 000			EQ	BLM
BLMC033	Cemeteries	Maviljan	Maviljan	Provision of fencing	Protection of Heritage sites			500, 000		EQ	BLM
BLMC034	Parks	Mkhuhlu	Mkhuhlu Township	Provision of parks	Recreational facilities		500, 000			EQ	BLM
BLMC035	Cemeteries	Mkhuhlu	Mkhuhlu	Provision of fencing	Protection of Heritage sites		5, 000, 000			EQ	BLM
BLMC036	Regional Office	Shatale	Shatale Township	Provision of office/ Facilities	Availability of Office space		2, 000, 000			EQ	BLM
BLMC037	Parks	Shatale	Shatale Township	Provision of parks	Recreational facilities			500, 000		EQ	BLM
BLMC038	Cemeteries	Shatale	Shatale	Provision of cemeteries	Protection of Heritage sites			5, 000, 000		EQ	BLM
BLMC039	Halls	Thulamahashe	Thulamahashe Township	Provision of Hall	Recreational facilities		1, 500, 000			EQ	BLM
BLMC040	Construction of Library	Thulamahashe	Thulamahashe	Provision of Hall	Recreational facilities	1, 000, 000				EQ	DCSR
BLMC041	Parks	Thulamahashe	Thulamahashe Township	Provision of parks	Recreational facilities			500, 000		EQ	BLM
BLMC042	Disabled centers	Thulamahashe	Thulamahashe Township	Provision of facilities	Recreational facilities		3, 000, 000			EQ	BLM



BUSHBUCKRIDGE LOCAL MUNICIPALITY

SOCIAL DEVELOPMENT PROJECTS

Project ID	Project Name	Project Location	Project Beneficiaries	Project Objective	KEY Performance Indicator	Period Budget 2009/2010	Budget 2010/2011	Budget 2011/2012	Source of Funding	Implementing Agency
BLMSD001	Construction of 6 offices	Acornhoek	Cottondale	Improve living standards for every member of the community	Reduction of deadly diseases and change in community behaviour	500,000			National Treasury	Dept of Social Development
BLMSD002	Construction of 6 offices	Agincourt	Ximhungwe	Improve living standards for every member of the community	Reduction of deadly diseases and change in community behaviour	500,000			National Treasury	Dept of Social Development
BLMSD003	Construction of branch offices	BBR Community	Thabakgolo, Brooklyn, Lilydale, Dumphries, Cork, and Shatale	Improve living standards for every member of the community	Better life for all	1,000,000			National Treasury	Dept of Social Development
BLMSD004	Construction of Pay point for grants	Casteel	Casteel MPCC	Improve living standards for every member of the community	Better life for all	1,000,000			National Treasury	Dept of Social Development
BLMSD005	Construction of 6 offices	Hluvukani	Hluvukani	Improve living standards for every member of the community	Better life for all	500,000			National Treasury	Dept of Social Development
BLMSD006	Construction of pay point for grants	Mariti	Mariti	Improve living standards for every member of the community	Better life for all		1,000,000		National Treasury	Dept of Social Development



INTEGRATED DEVELOPMENT PLAN

BLMSD007	Construction of Pay point for grants	Maviljan	Bushbuckridge	Improve living standards for every member of the community	Better life for all		1,000,000		National Treasury	Dept of Social Development
BLMSD008	Construction of Pay point for grants	Mkhuhlu	Calcutta & Mkhuhlu	Improve living standards for every member of the community	Better life for all		1,000,000		National Treasury	Dept of Social Development
BLMSD009	Construction of Pay point for grants	Thulamahashe	Thulamahashe Township	Improve living standards for every member of the community	Better life for all		1,000,000		National Treasury	Dept of Social Development

BUSHBUCKRIDGE LOCAL MUNICIPALITY

Transport Projects

Project ID	Project Name	Project Location	Project Beneficiaries	Project Objective	KEY Performance Indicator	Period Budget 2009/2010	Budget 2010/2011	Budget 2011/2012	Source of Funding	Implementing Agency
BLMT001	Construction of DLTC offices and Strong room	BBR	Mhala DLTC, Hluvukani, Acomhoek, Mkhuhlu and Shatale	To promote an effective and affordable transport system	Safe and reliable transport system	4, 500, 000			EQ	BLM
BLMT002	Relocation GNT Bus depot	Dwarsloop	Dwarsloop	To promote an effective taxi facility and affordable transport system	Safe and reliable transport system	5,000,000			Urban Renewal	BLM
BLMT003	Construction of Mapulaneng Traffic testing station	Maviljan	Bushbuckridge	To promote an effective and affordable transport system	Safe and reliable transport system	2, 000, 000			EQ	BLM

INTEGRATED DEVELOPMENT PLAN



Bushbuckridge Local Municipality
Integrated Development Plan: Revision 2009/2010-2010/2011-2011/2012

BLMT004	Construction of Multi-Nodal Taxi Facilities	Maviljan	Maviljan	To promote an effective taxi facility and affordable transport system	Safe and reliable transport system	14,000,000			National Treasury	Dept of Roads & Transport
BLMT005	Upgrading of Vehicle testing station	Thulamahashe	Mhala	To promote an effective taxi facility and affordable transport system	Safe and reliable transport system	1,000,000			EQ	BLM
BUSHBUCKRIDGE LOCAL MUNICIPALITY										
Telecommunication Projects										
Project ID	Project Name	Project Location	Project Beneficiaries	Project Objective	KEY Performance Indicator	Period Budget 2008/2009	Budget 2009/2010	Budget 2010/2011	Source of Funding	Implementing Agency
TEL001	Installation of telephone lines	All Regions	All villages	Provision of Telecommunication facilities	Eradicated backlog on Telecommunication		2,000,000		DOC	Telkom